

NOTICE TO BIDDERS

PAVEMENT RECONSTRUCTION

Notice is hereby given that sealed bids will be received by the Town of Ellettsville for pavement resurfacing at the office of the Ellettsville Clerk/Treasurer, 1150 W. Guy McCown Drive, Ellettsville, Indiana 47429 until 4:00 p.m., (local time) on Monday the 12th day of May, 2025. Bids received after that time will not be accepted. Bids delivered in person may be delivered to the Clerk-Treasurer's office between the hours of 7:30 AM and 4:00 PM.

All bids received will be publicly opened and read aloud by the Town Council at its regular meeting on Monday the 12th day of May, 2025, at 6:30 p.m., 1150 W. Guy McCown Drive, Ellettsville, Indiana 47429. The bids will be taken under advisement and the winning bid will be announced at the Tuesday, May 27, 2025 Town Council meeting at 6:30 p.m.

The project is funded through a Community Crossings Matching Grant, administered by the Indiana Department of Transportation. The bidder to whom work is awarded shall comply with requirements of said Agency.

The proposed work includes the following:

The Town of Ellettsville – Community Crossings Matching Grant – Resurfacing of various streets in Ellettsville, Indiana

The project shall consist of milling streets 1.5 inches, sweeping as needed and legally disposing of all waste off site; applying liquid asphalt tack to ensure bonding of new mat; paving 1.5 inches of 9.5mm surface mix and roll thoroughly; and providing traffic control. A total of 7 streets in the Town of Ellettsville are to be resurfaced.

This is one project. One bid is requested for all 7 streets. No partial bids shall be accepted. Each bid proposal shall list the estimate for each of the 7 streets and the total bid for the entire project. 2 of the 7 streets are listed in sections.

Work shall be completed by September 30th, 2025.

The itemized bid price shall include all items necessary to have a complete and operational system in accordance with the plans and bidding documents upon completion of paving. **All bids shall be submitted on Contractors Bid for Public Works – Form 96** as prescribed by the Indiana State Board of Accounts.

All bid proposals shall be in full accord, which are on file with the Town of Ellettsville and may be examined by prospective bidders at the Town's website at www.ellettsville.in.us. Prospective bidders may also contact Kip Headdy or Jay Humphrey at 812-876-8616 to make an appointment to view the bid documents in person. Bidding documents will be available Thursday, April 24, 2025. A certified check drawn on a solvent bank or bid bond payable without condition to the Town of Ellettsville, in an amount not less than ten percent (10%) of the bid total shall be submitted with each proposal. After the Town has made an award, the bid securities will be returned within thirty (30) days.

The Town of Ellettsville reserves the right to reject any or all bids, to waive any informalities or irregularities in the bids received or to accept any proposal which is deemed most favorable to the Town of Ellettsville.

For questions, please contact Kip Headdy, Ellettsville Public Works at kheaddy@ellettsville.in.us or 812-876-8616

The Town of Ellettsville
By: The Ellettsville Town Council
Scott Oldham, President

2025 Community Crossings Grant Street Listings

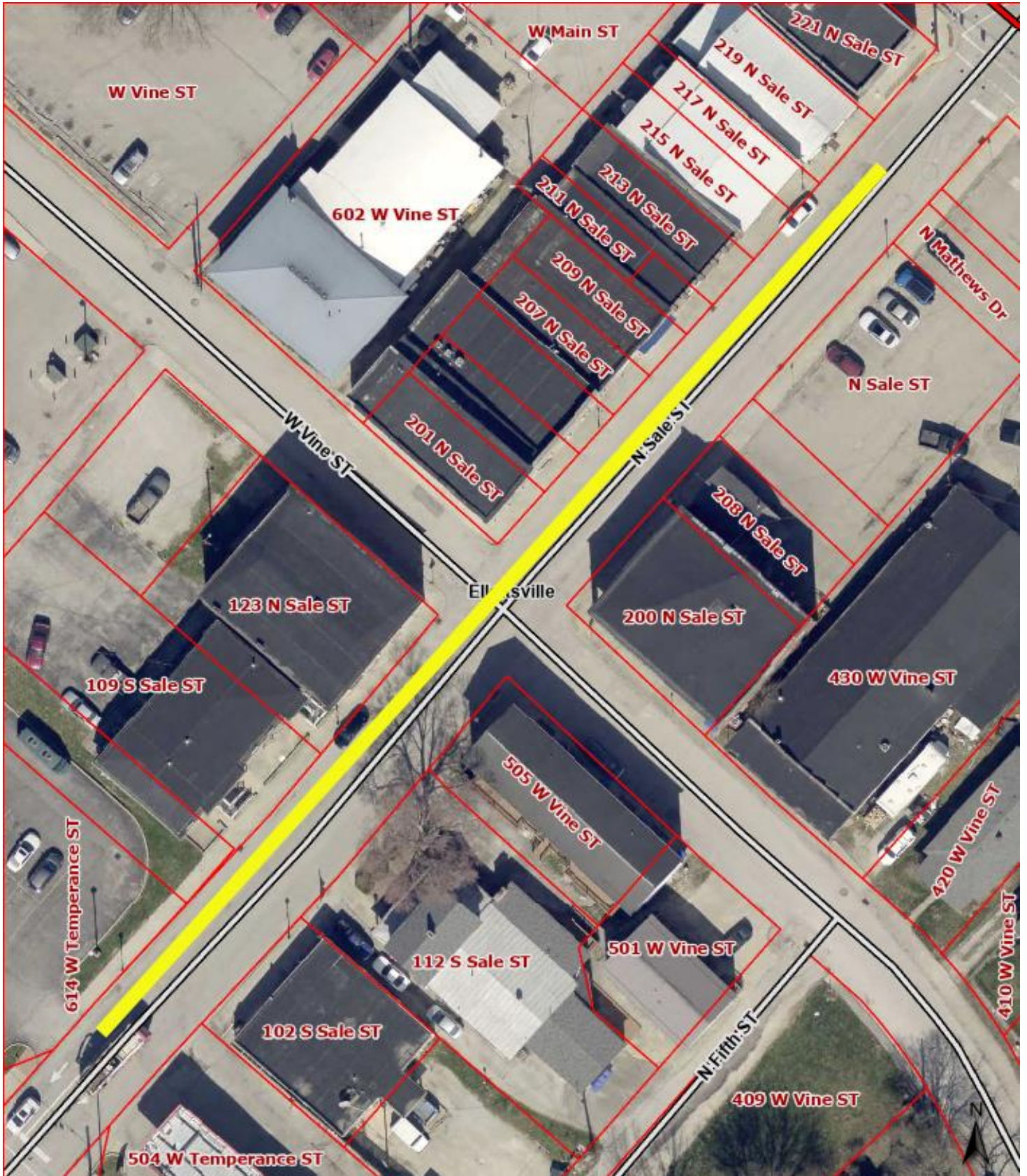
Street and Description

<u>1</u> N. Sale St. - From W. Main St. to W. Temperance St. - Sections 2 & 3	\$0.00
<u>2</u> S. Sale St. - From W. Temperance St. to W. Association St. - Section 4	\$0.00
<u>3</u> S. Sale St. - From W. Association St. to W. Oak St. - Section 5	\$0.00
<u>4</u> S. Sale St. - From W. Oak St. to W. Ritter St. - Section 6	\$0.00
<u>5</u> S. Sale St. - From W. Ritter St. to N. Thomas Rd. - Sections 7 & 8	\$0.00
<u>6</u> W. Rosewood St. - From S. Ridge Springs Ln. to S. Tulip Tree Ct.	\$0.00
<u>7</u> S. Tulip Tree Ct. - From End of Cul-de-Sac to End of Cul-de-Sac	\$0.00
<u>8</u> N. Beechwood Dr. - From S. Ridge Springs Ln. to S. Birch St.	\$0.00
<u>9</u> S. Birch St. - From End of Cul-de-Sac to Dead End	\$0.00
<u>10</u> N. Impatiens St. (1) - From 276 N. Impatiens St. to W. Raymond Run	\$0.00
<u>11</u> N. Impatiens St. (2) - From W. Raymond Run to End of Second Cul-de-Sac	\$0.00
<u>12</u> W. Higgins Ct. - From N. Impatiens St. to End of Cul-de-Sac	\$0.00

Total \$0.00

1. N. Sale St. (Sections 2 & 3)
From W. Main St. to W. Temperance St.

Created by: Kip Headdy



N. Sale Street - Sections 2 & 3

Pavement resurfacing including incidental associated work

N. Sale St. from W. Main St. to W. Temperance St.

Length: 407 feet

Width: 34 feet

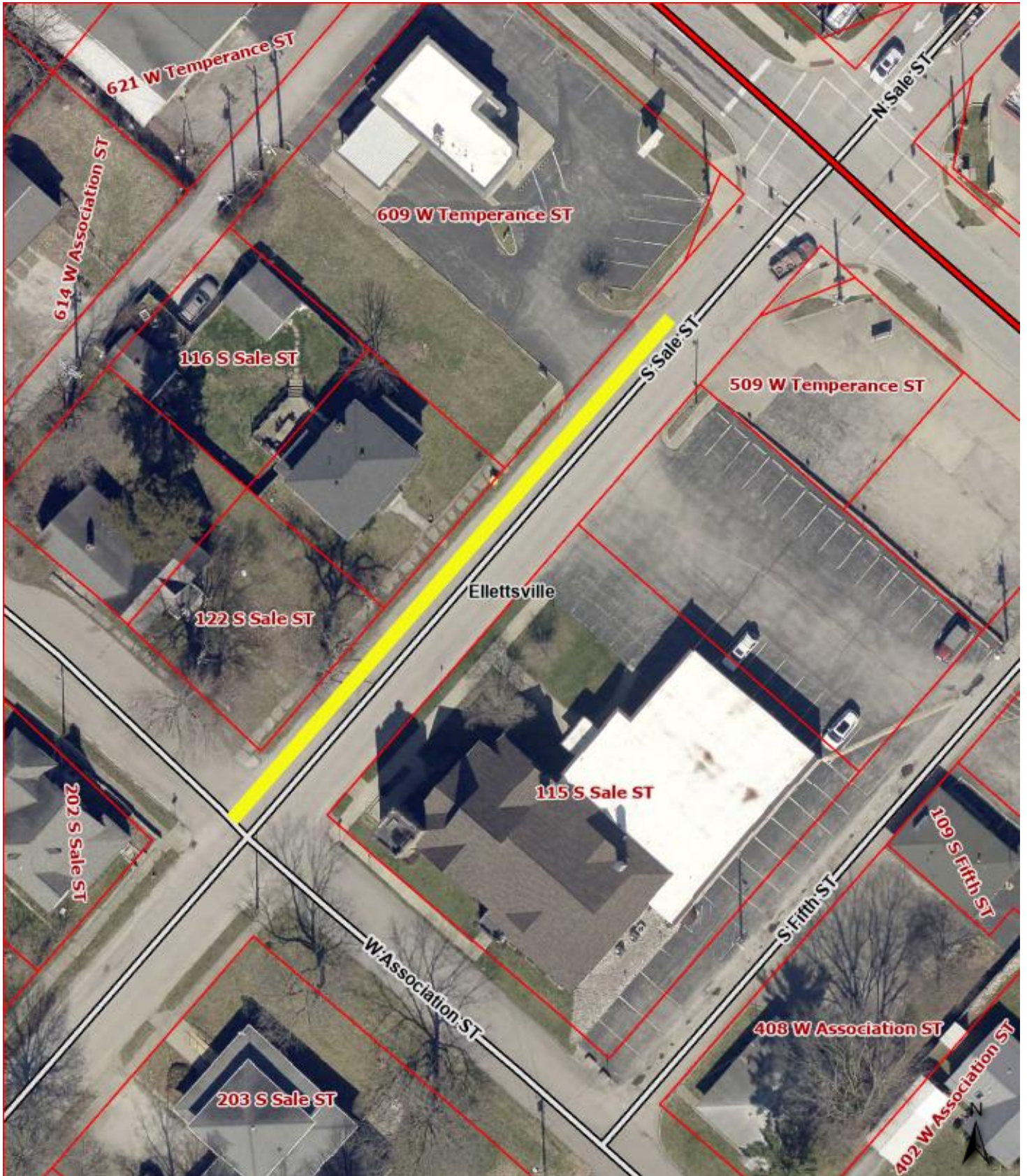
Resurfacing Thickness: 1.5 inches

Description	Quantity	Unit	Unit Price	Extension
Mobilization/Demobilization	1	LS		
Milling Asphalt 1.5 inches	1,538	SYS		
HMA Wedge and Level, Type B	20	TON		
Asphalt for Tack Coat	1,538	SYS		
HMA, Surface Type B	127	TON		
Stripping	814	SNGLF		
Total Amount of Quote				

2. N. Sale St. (Section 4)

Created by: Kip Headdy

From W. Temperance St. to W. Association St.



S. Sale St. Section 4

Pavement resurfacing including incidental associated work
S. Sale St. from W. Temperance St. to W. Association St.

Length: 245 feet

Width: 30 feet

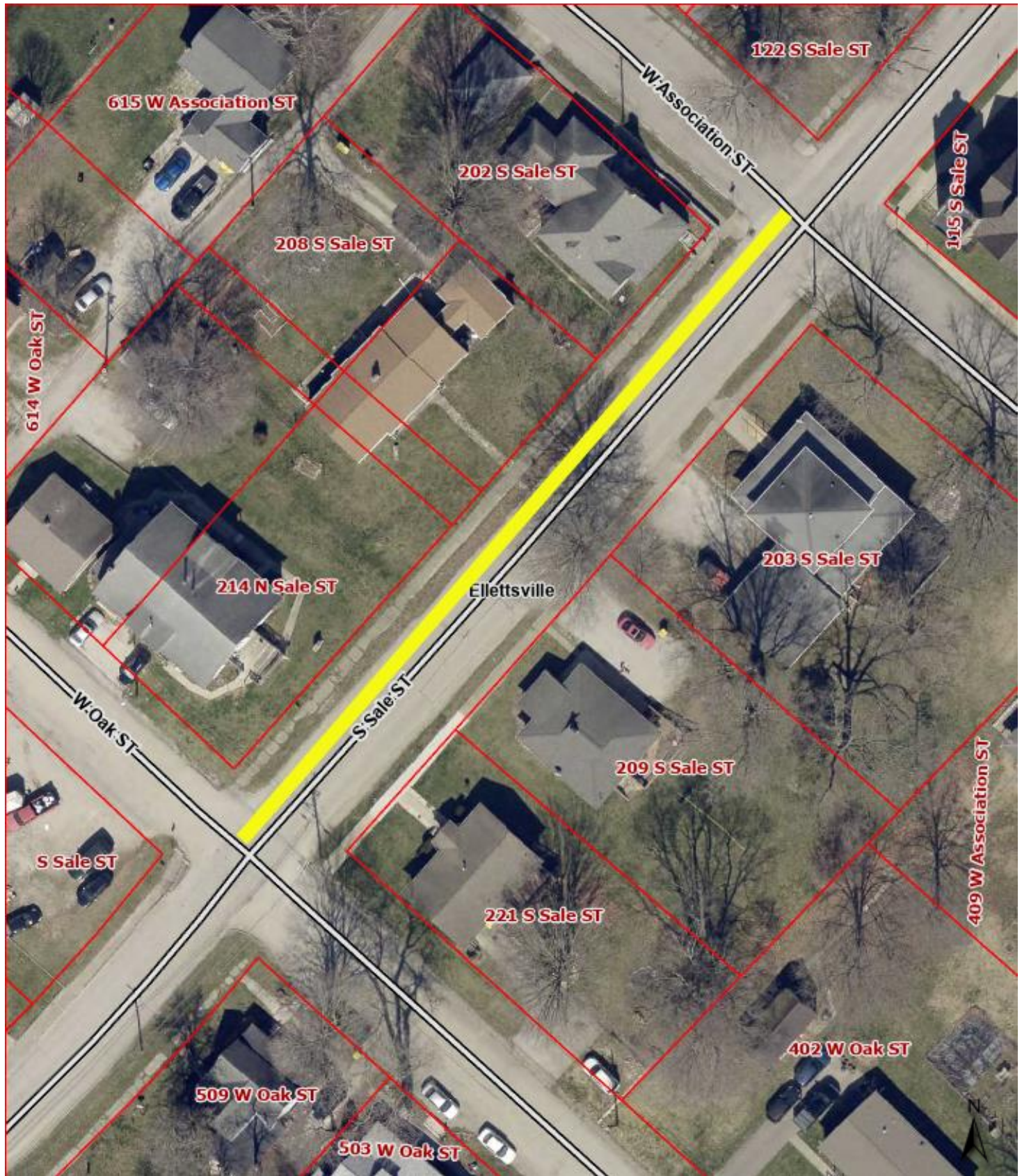
Resurfacing Thickness: 1.5 inches

Description	Quantity	Unit	Unit Price	Extension
Mobilization/Demobilization		LS		
Milling Asphalt 1.5 inches	817	SYS		
HMA Wedge and Level, Type B	20	TON		
Asphalt for Tack Coat	817	SYS		
HMA, Surface Type B	68	TON		
Stripping	490	SNGLF		
Total Amount of Quote				

3. N. Sale St. (Section 5)

Created by: Kip Headdy

From W. Association St. to W. Oak St.



S. Sale St. Section 5

Pavement resurfacing including incidental associated work

S. Sale St. from W. Association St. to W. Oak St.

Length: 302 feet

Width: 28 feet

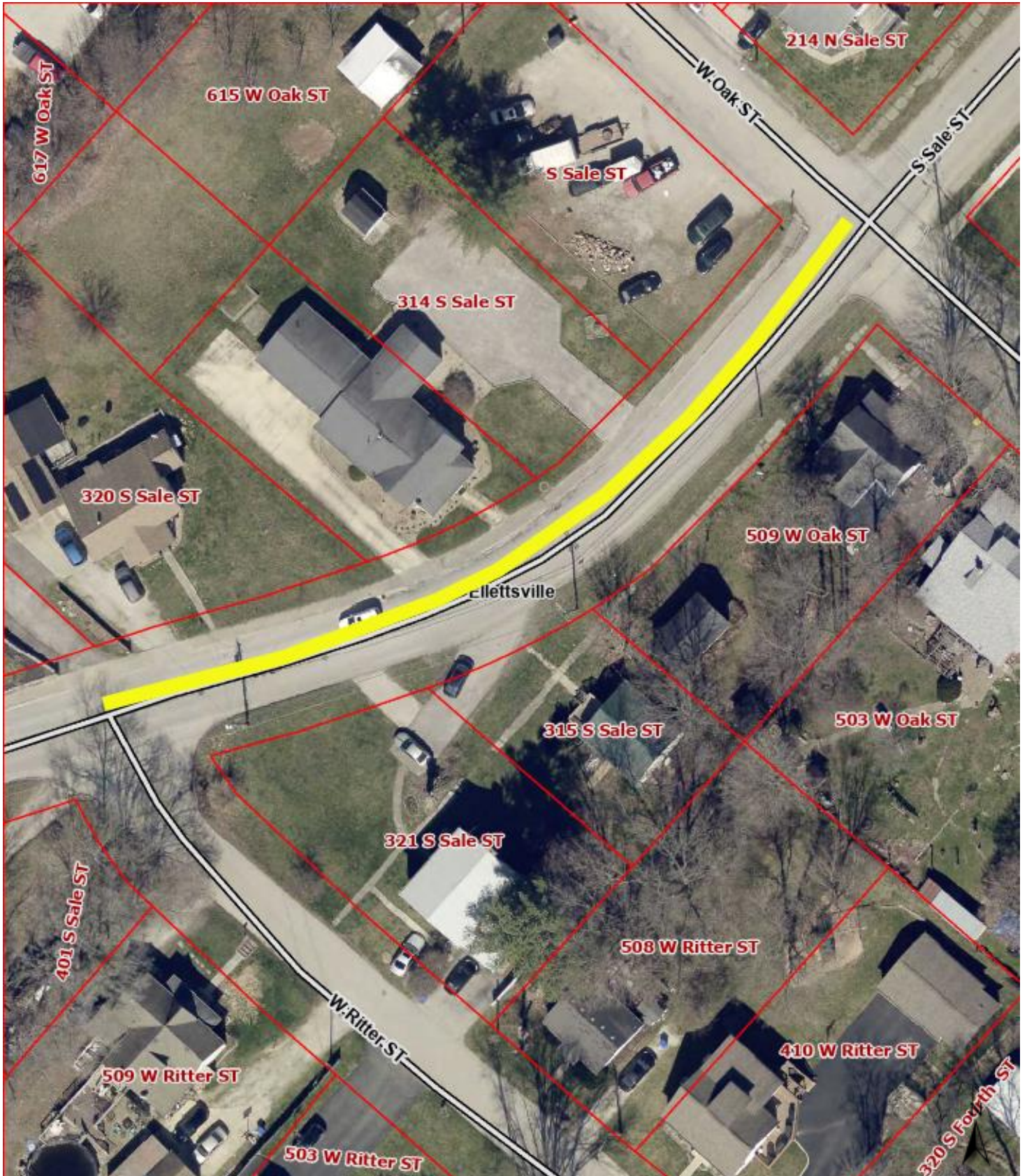
Resurfacing Thickness: 1.5 inches

Description	Quantity	Unit	Unit Price	Extension
Mobilization/Demobilization		LS		
Milling Asphalt 1.5 inches	940	SYS		
HMA Wedge and Level, Type B	20	TON		
Asphalt for Tack Coat	940	SYS		
HMA, Surface Type B	78	TON		
Stripping	604	SNGLF		
Total Amount of Quote				

4. N. Sale St. (Section 6)

Created by: Kip Headdy

From W. Oak St. to W. Ritter St.



S. Sale St. Section 6

Pavement resurfacing including incidental associated work

S. Sale St. from W. Oak St. to W. Ritter St.

Length: 334 feet

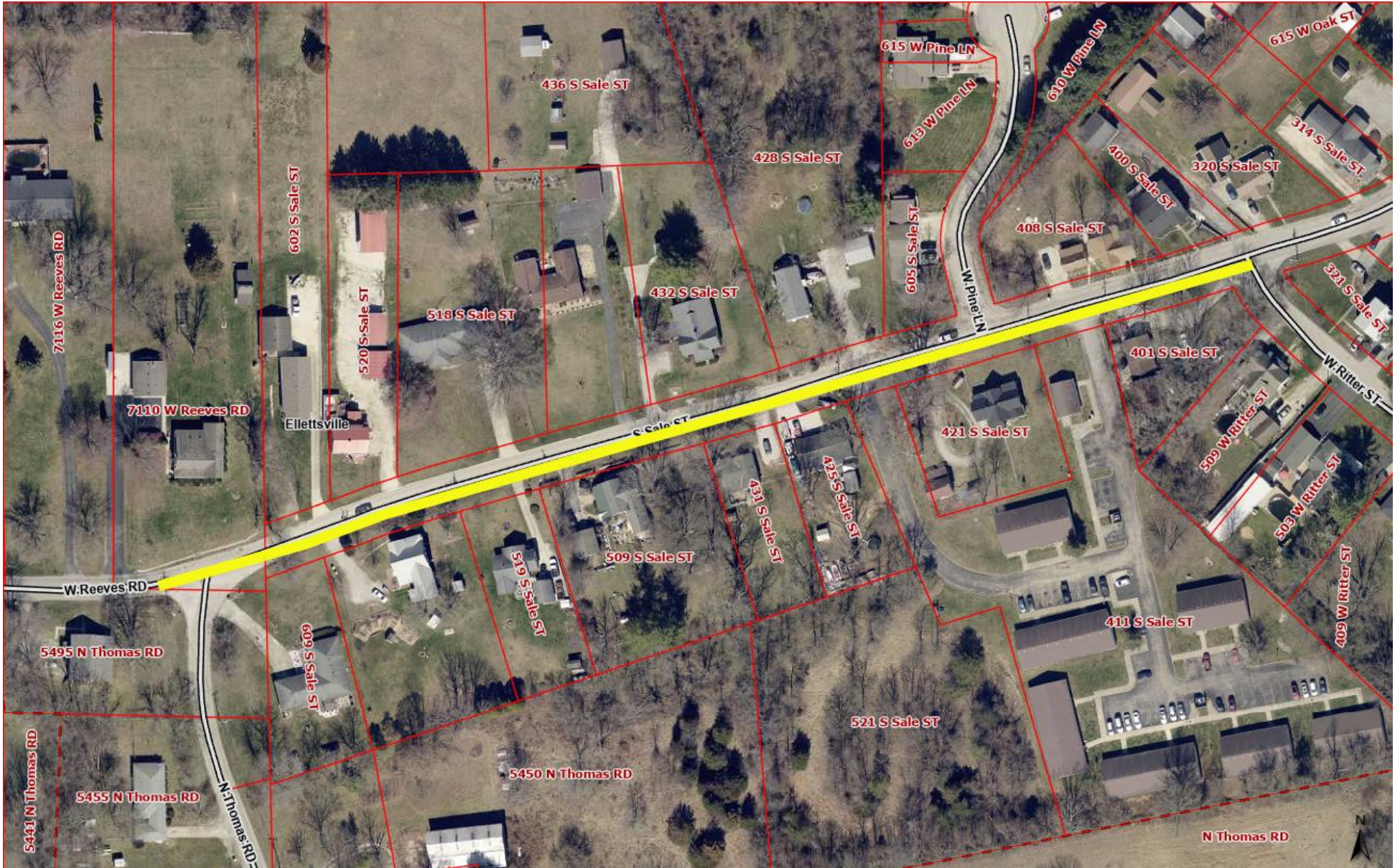
Width: 22 feet

Resurfacing Thickness: 1.5 inches

Description	Quantity	Unit	Unit Price	Extension
Mobilization/Demobilization		LS		
Milling Asphalt 1.5 inches	816	SYS		
HMA Wedge and Level, Type B	20	TON		
Asphalt for Tack Coat	816	SYS		
HMA, Surface Type B	68	TON		
Stripping	668	SNGLF		
			Total Amount of Quote	

5. N. Sale St. (Sections 7 & 8)
From W. Ritter St. to N. Thomas Rd.

Created by: Kip Headdy



S. Sale St. Section 7 & 8

Pavement resurfacing including incidental associated work

S. Sale St. From W. Ritter St. to N. Thomas Rd.

Length: 1,098 feet

Width: 20 feet

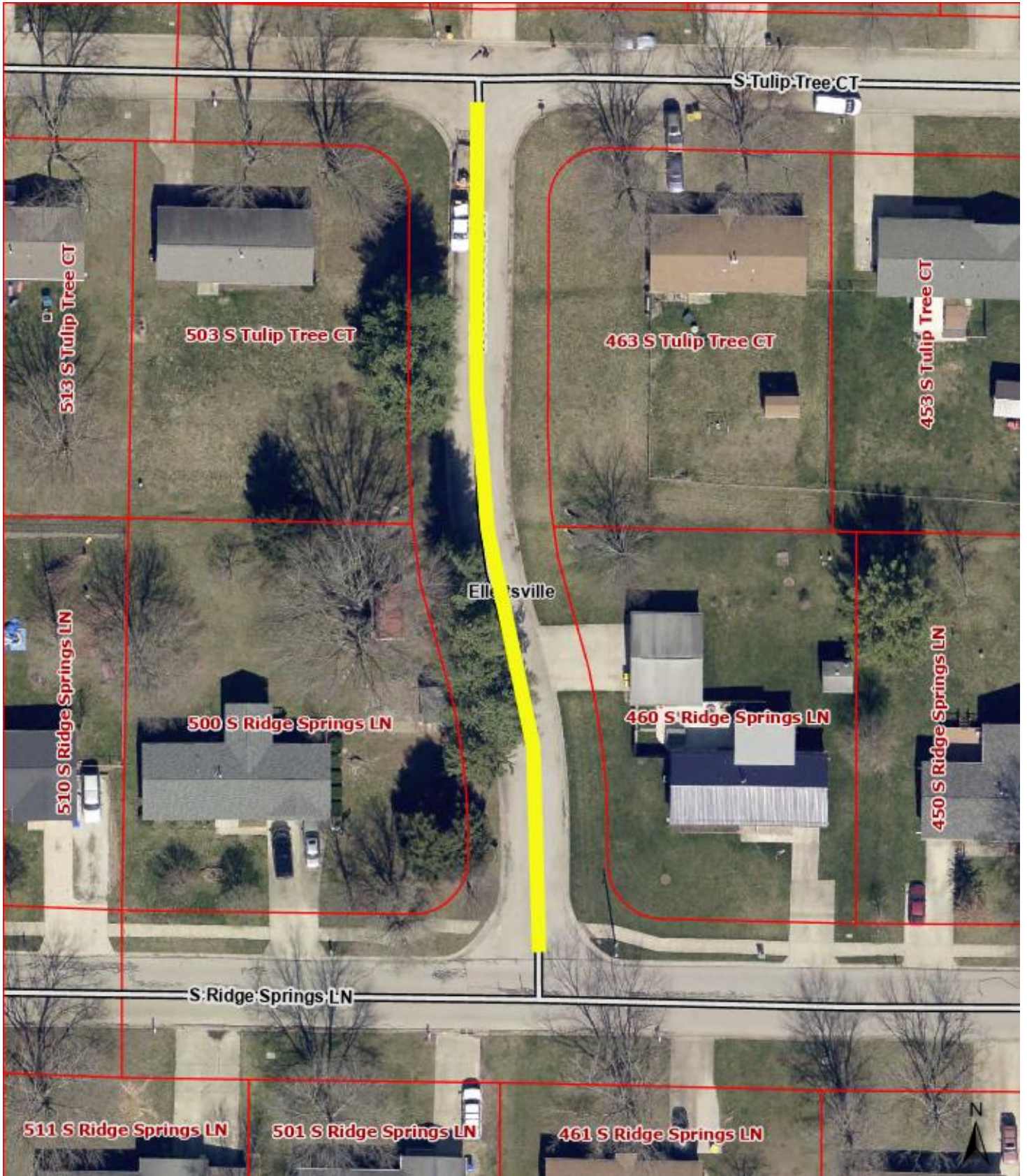
Resurfacing Thickness: 1.5 inches

Description	Quantity	Unit	Unit Price	Extension
Mobilization/Demobilization		LS		
Milling Asphalt 1.5 inches	2,440	SYS		
HMA Wedge and Level, Type B	40	TON		
Asphalt for Tack Coat	2,440	SYS		
HMA, Surface Type B	202	TON		
Stripping	2,196	SNGLF		
Total Amount of Quote				

6. W. Rosewood St.

Created by: Kip Headdy

From S. Ridge Springs Ln. to S. Tulip Tree Ct.



W. Rosewood St.

Pavement resurfacing including incidental associated work

W. Rosewood St. - From S. Ridge Springs Ln. to S. Tulip Tree Ct.

Length: 332 feet

Width: 20 feet

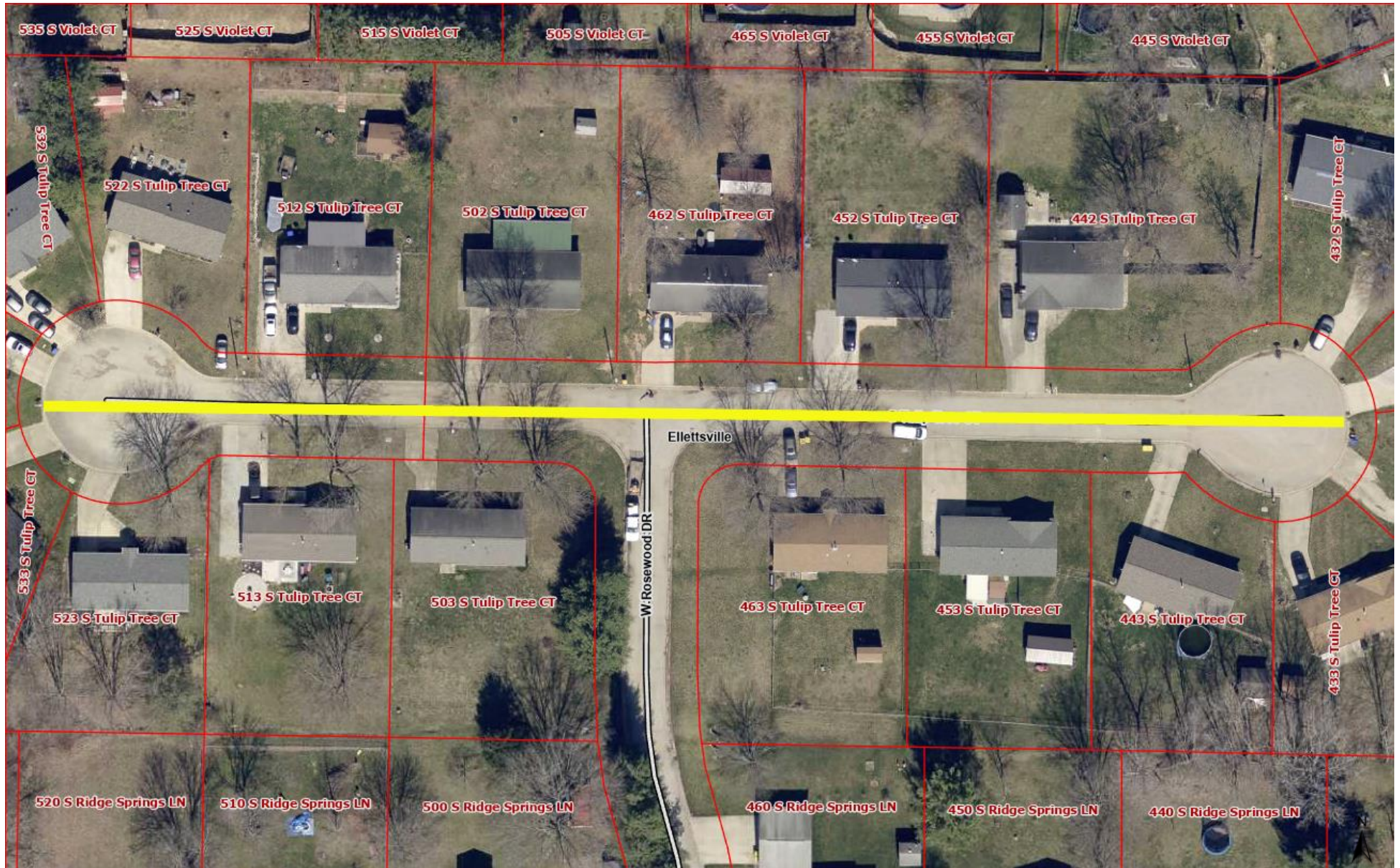
Resurfacing Thickness: 1.5 inches

Description	Quantity	Unit	Unit Price	Extension
Mobilization/Demobilization	1	LS		
Milling Asphalt 1.5 inches	838	SYS		
HMA Wedge and Level, Type B	20	TON		
Asphalt for Tack Coat	838	SYS		
HMA, Surface Type B	70	TON		
			Total Amount of Quote	

7. S. Tulip Tree Ct.

Created by: Kip Headdy

From end of Cul-de-Sac to W. Rosewood St. to End of second Cul-de-Sac



S. Tulip Tree Court

Pavement resurfacing including incidental associated work

S. Tulip Tree Court - From End of Cul-de-Sac to End of Cul-de-Sac

Length: 492 feet

Width: 20 feet

Diameter 70 feet

Diameter 70 feet

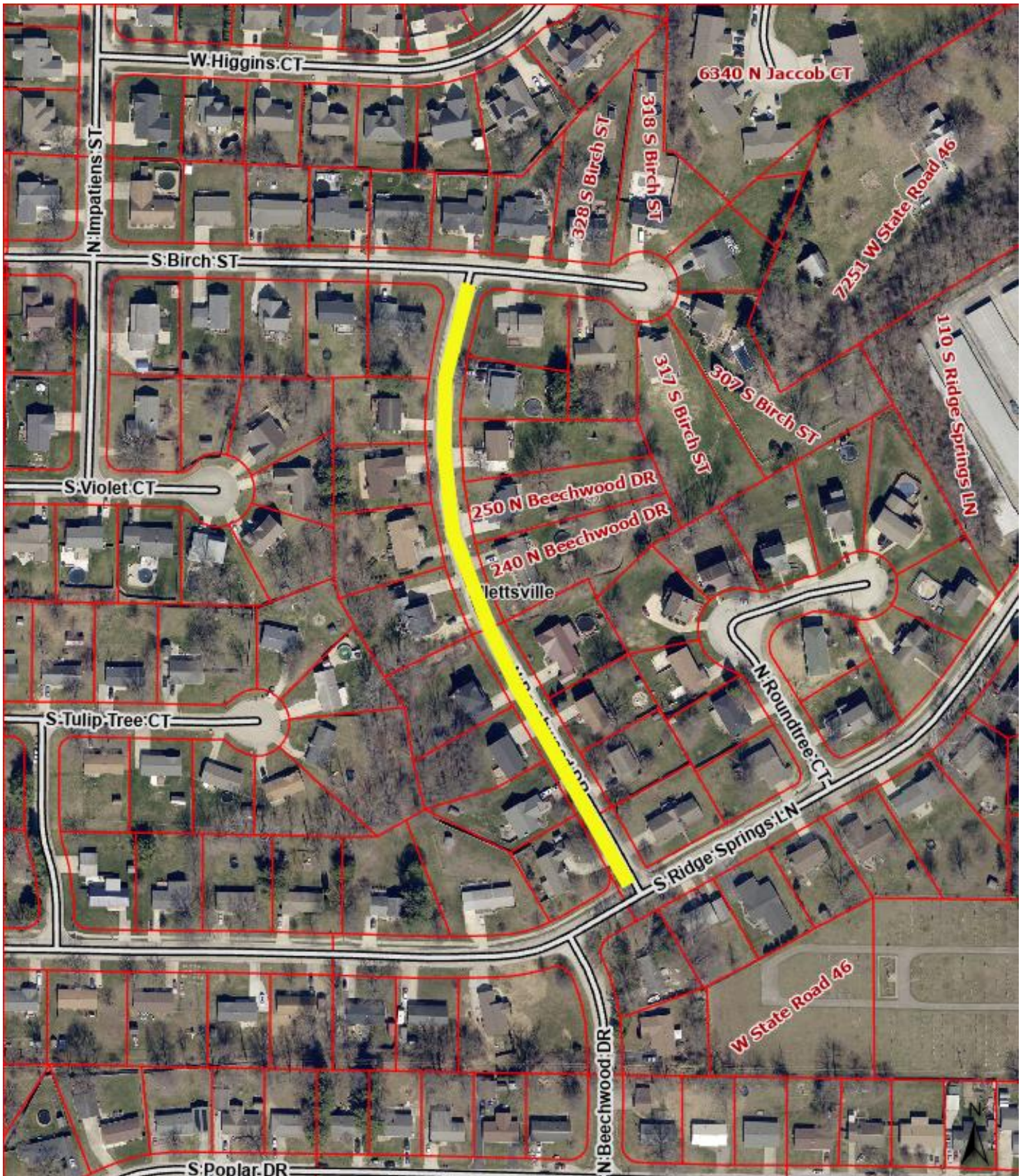
Resurfacing Thickness: 1.5 inches

Description	Quantity	Unit	Unit Price	Extension
Mobilization/Demobilization	1	LS		
Milling Asphalt 1.5 inches	2,054	SYS		
HMA Wedge and Level, Type B	20	TON		
Asphalt for Tack Coat	2,054	SYS		
HMA, Surface Type B	170	TON		
Total Amount of Quote				

8. N. Beechwood Dr.

Created by: Kip Headdy

From S. Ridge Springs Ln. to S. Birch St.



N. Beechwood Dr.

Pavement resurfacing including incidental associated work
N. Beechwood Dr. - From S. Ridge Springs Ln. to S. Birch St.

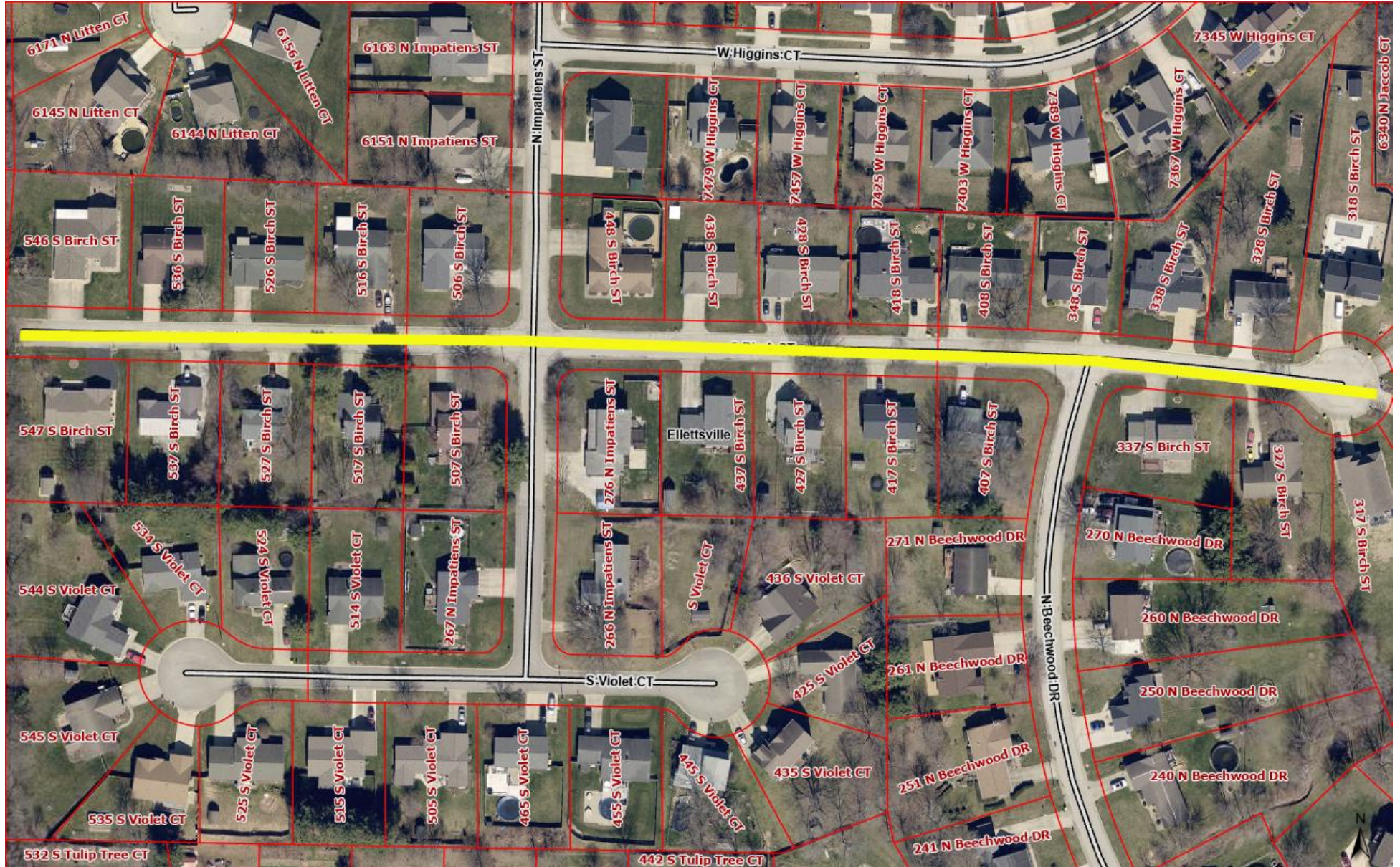
Length: 970 feet
Width: 24 feet
Resurfacing Thickness: 1.5 inches

Description	Quantity	Unit	Unit Price	Extension
Mobilization/Demobilization	1	LS		
Milling Asphalt 1.5 inches	2,687	SYS		
HMA Wedge and Level, Type B	20	TON		
Asphalt for Tack Coat	2,687	SYS		
HMA, Surface Type B	221	TON		
			Total Amount of Quote	

9. S. Birch St.

Created by: Kip Headdy

From Dead End to End of Cul-de-Sac



S. Birch St.

Pavement resurfacing including incidental associated work

S. Birch St. - From End of Cul-de-Sac to Dead End

Length: 1,253 feet

Width: 24 feet

Diameter 70 feet

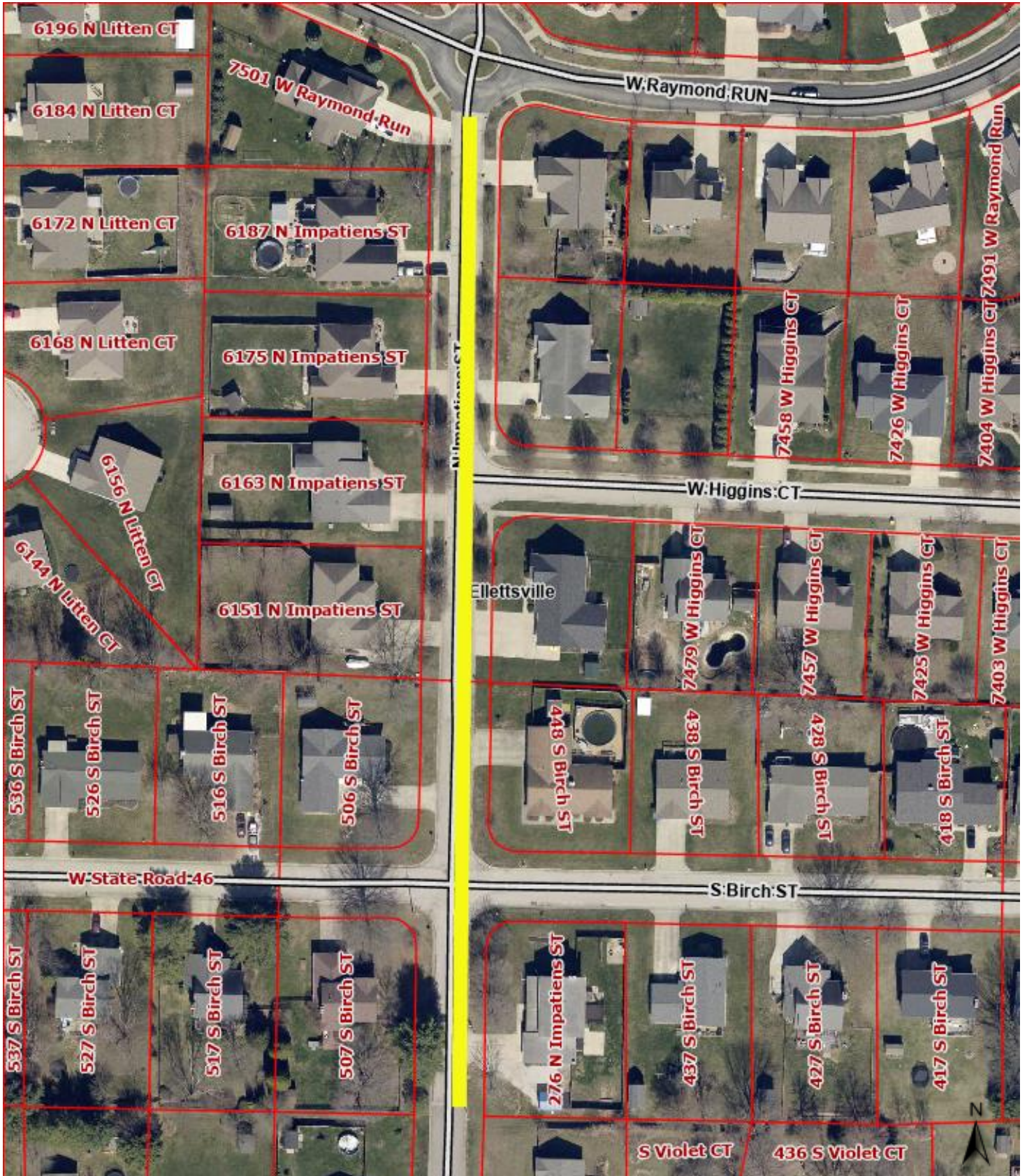
Resurfacing Thickness: 1.5 inches

Description	Quantity	Unit	Unit Price	Extension
Mobilization/Demobilization	1	LS		
Milling Asphalt 1.5 inches	3,869	SYS		
HMA Wedge and Level, Type B	30	TON		
Asphalt for Tack Coat	3,869	SYS		
HMA, Surface Type B	311	TON		
Total Amount of Quote				

10. N. Impatiens St.

Created by: Kip Headdy

From 276 N. Impatiens St. to W. Raymond Run



N. Impatiens St.

Pavement resurfacing including incidental associated work

N. Impatiens St. - From 276 N. Impatiens St. to W. Raymond Run

Length: 687 feet

Width: 24 feet

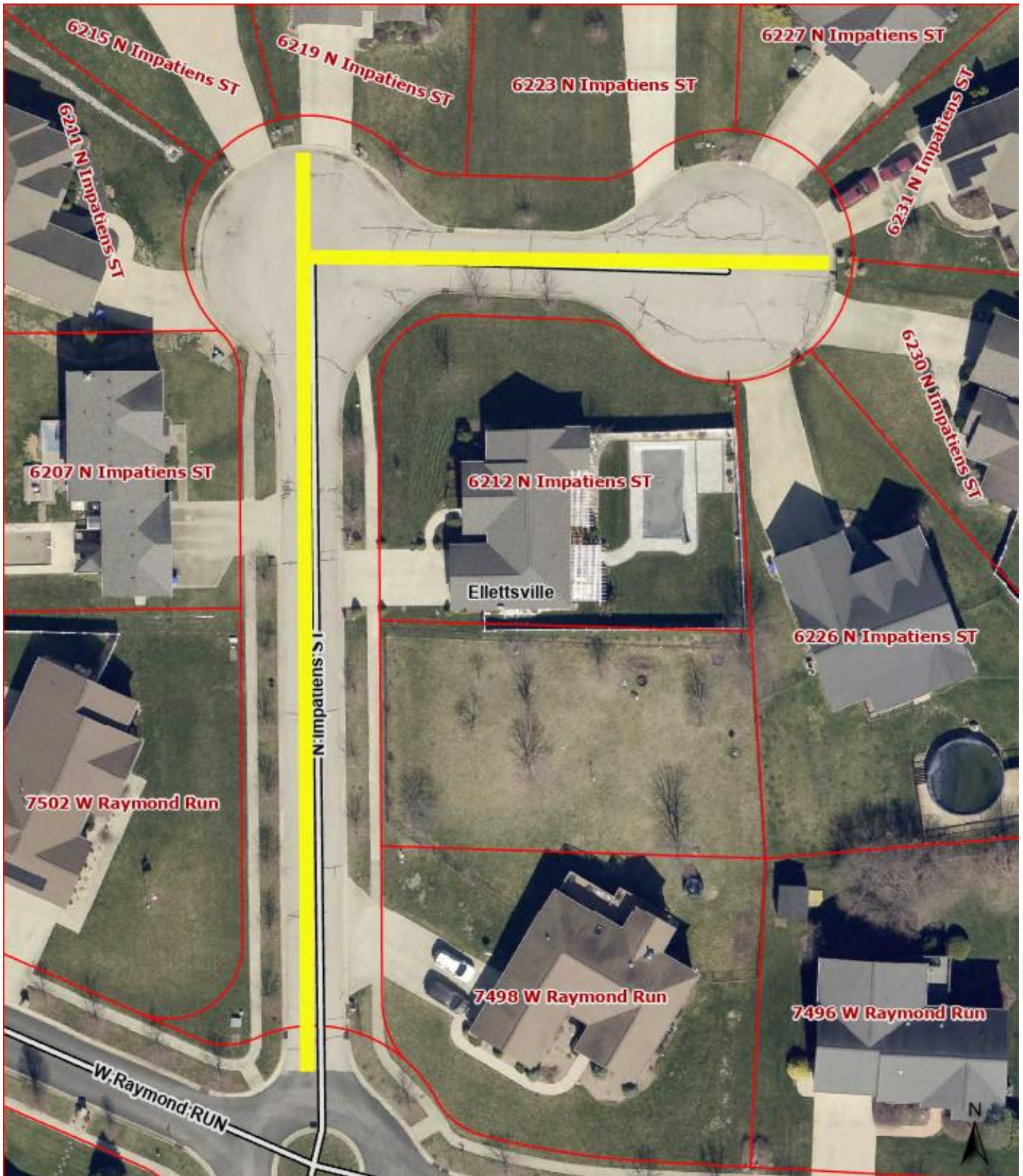
Resurfacing Thickness: 1.5 inches

Description	Quantity	Unit	Unit Price	Extension
Mobilization/Demobilization	1	LS		
Milling Asphalt 1.5 inches	1,932	SYS		
HMA Wedge and Level, Type B	20	TON		
Asphalt for Tack Coat	1,932	SYS		
HMA, Surface Type B	160	TON		
			Total Amount of Quote	

11. N. Impatiens St.

Created by: Kip Headdy

From W. Raymond Run to End of Second Cul-de-Sac



N. Impatiens St. (2)

Pavement resurfacing including incidental associated work

N. Impatiens St. From W. Raymond Run to End of Second Cul-de-Sac

Length: 354 feet

Width: 20 feet

Diameter 76 feet

Diameter 76 feet

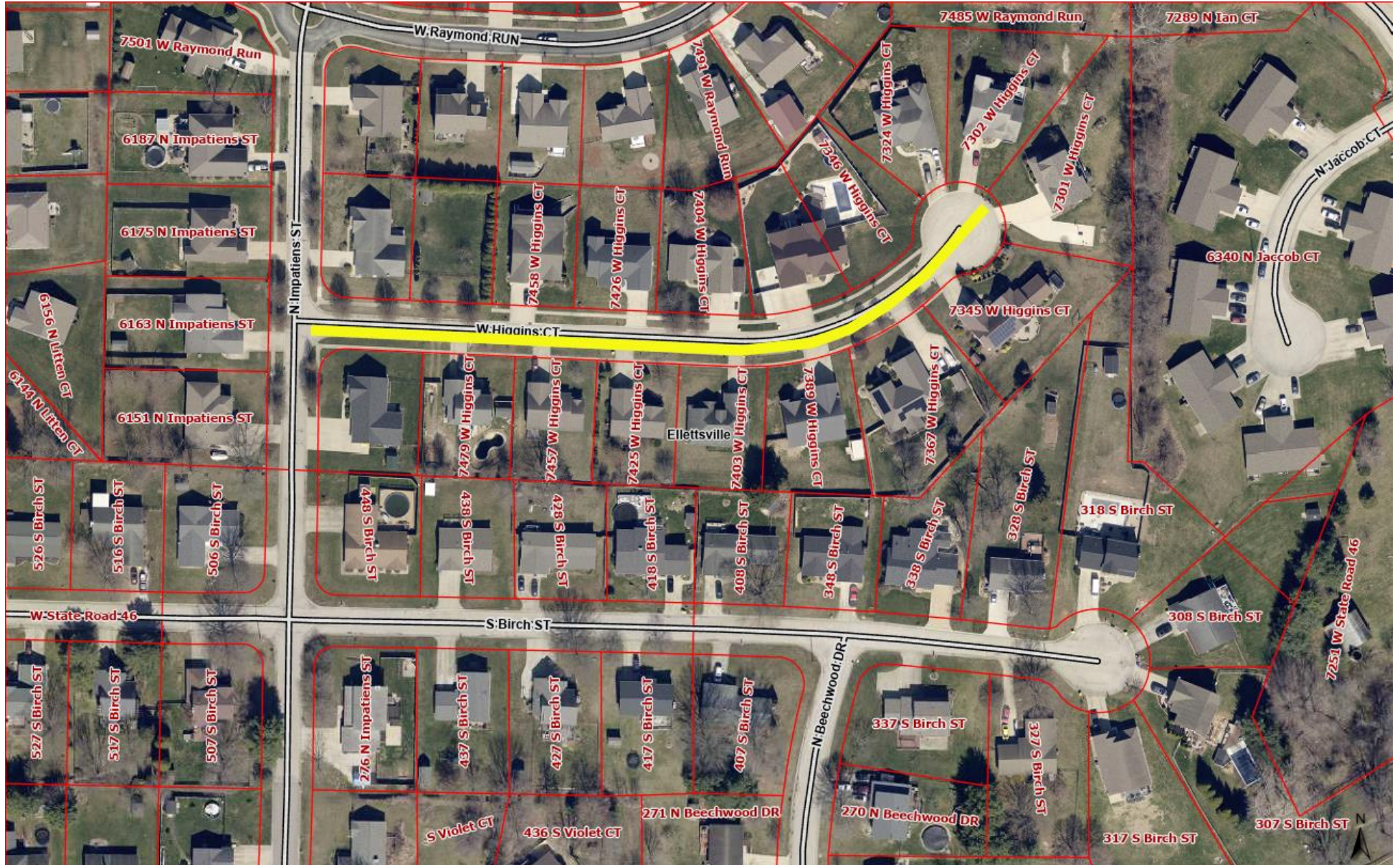
Resurfacing Thickness: 1.5 inches

Description	Quantity	Unit	Unit Price	Extension
Mobilization/Demobilization		LS		
Milling Asphalt 1.5 inches	1,855	SYS		
HMA Wedge and Level, Type B	20	TON		
Asphalt for Tack Coat	1,855	SYS		
HMA, Surface Type B	161	TON		
Total Amount of Quote				

12. W. Higgins Ct.

Created by: Kip Headdy

From N. Impatiens St. to End of Cul-de-Sac



W. Higgins Ct.

Pavement resurfacing including incidental associated work
W. Higgins Ct. - From N. Impatiens St. to End of Cul-de-Sac

Length: 648 feet

Width: 20 feet

Diameter 70 feet

Resurfacing Thickness: 1.5 inches

Description	Quantity	Unit	Unit Price	Extension
Mobilization/Demobilization	1	LS		
Milling Asphalt 1.5 inches	1,968	SYS		
HMA Wedge and Level, Type B	20	TON		
Asphalt for Tack Coat	1,968	SYS		
HMA, Surface Type B	127	TON		
			Total Amount of Quote	