

# NOTICE TO BIDDERS

## PAVEMENT RECONSTRUCTION

Notice is hereby given that sealed bids will be received by the Town of Ellettsville for pavement resurfacing at the office of the Ellettsville Clerk/Treasurer, 1150 W. Guy McCown Drive, Ellettsville, Indiana 47429 until 4:00 p.m., (local time) on Monday the 23<sup>rd</sup> day of May, 2022. Bids received after that time will not be accepted. Bids delivered in person may be delivered to the Clerk-Treasurer's office or deposited in the Utilities' Office mail slot located at the Town Hall on Guy McCown Drive.

All bids received will be publicly opened and read aloud by the Town Council at its regular meeting on Monday the 23<sup>rd</sup> day of May, 2022, at 6:30 p.m., 1150 W. Guy McCown Drive, Ellettsville, Indiana 47429. The bids will be taken under advisement and the winning bid will be announced at the Monday, June 13<sup>th</sup>, 2022 Town Council meeting at 6:30 p.m.

The project is funded through a Community Crossings Matching Grant and administered by the Indiana Department of Transportation. The bidder to whom work is awarded shall comply with requirements of said Agency.

The proposed work includes the following:

### **The Town of Ellettsville – Community Crossings Matching Grant – Resurfacing of various streets in Ellettsville, Indiana**

The project shall consist of milling streets 1.5 inches, one street with 6 inch in depth repairs, sweeping as needed and legally disposing of all waste off site; applying liquid asphalt tack to ensure bonding of new mat; paving 1.5 inches of 9.5mm surface mix and roll thoroughly; and providing traffic control. A total of fourteen streets in the Town of Ellettsville are to be resurfaced.

**This is one project. One bid is requested for all fourteen streets. No partial bids shall be accepted. Each bid proposal shall list the estimate for each of the fourteen streets and the total bid for the entire project.**

The itemized bid price shall include all items necessary to have a complete and operational system in accordance with the plans and bidding documents upon completion of paving. **All bids shall be submitted on Contractors Bid for Public Works – Form 96** as prescribed by the Indiana State Board of Accounts.

All bid proposals shall be in full accord, which are on file with the Town of Ellettsville and may be examined by prospective bidders at the Town's website at [www.ellettsville.in.us](http://www.ellettsville.in.us). Prospective bidders may also contact Kip Headdy or Jay Humphrey at 812-876-8616 to make an appointment to view the bid documents in person. Bidding documents will be available as of Wednesday, May 11, 2022. A certified check drawn on a solvent bank or bid bond payable without condition to the Town of Ellettsville, in an amount not less than ten percent (10%) of the bid total shall be submitted with each proposal. After the Town has made an award, the bid securities will be returned within thirty (30) days.

The Town of Ellettsville reserves the right to reject any or all bids and to waive any informalities or irregularities in the bids received or to accept any proposal which is deemed most favorable to the Town of Ellettsville.

For questions, please contact Kip Headdy, Ellettsville Street Department, 104 S. Park Street, Ellettsville, Indiana 47429 812-876-8616

The Town of Ellettsville  
By: The Ellettsville Town Council  
William Ellis, President

## Milling W. Reeves Rd. South Side

W. Reeves Rd. Milling measurements using the west side of N. Sycamore Dr. as a starting point for measurements. These measurements are for the N. side of W. Reeves Rd.

- 1<sup>st</sup> is intersection is Reeves and Loudon mill 37'X10'X1.5".
- 2<sup>nd</sup> is intersection Loudon Rd. and Reeves mill 80'X10'X1.5".
- 3<sup>rd</sup> is Terry Ct. 872' from starting point. Milling. Mill 66'X10'X1.5".
- 4<sup>th</sup> is Mary St. which is 222' from Terry Ct. milling. Mill 65'X10'X1.5".
- 5<sup>th</sup> is Driveway which is 127' from Mary St. milling. Mill 35'X10'X1.5".
- 6<sup>th</sup> is Raubs Ln. which is 309' from Mary St. milling. Mill 51'X10'X1.5".
- 7<sup>th</sup> is Driveway which is 253' from Raubs Ln. milling. Mill 54'X10'X1.5".
- 8<sup>th</sup> is mill intersection of Reeves and Sale St. milling. Mill 22'X10'X1.5".

## Milling W. Reeves Rd. North side

W. Reeves Rd. Milling measurements using the west side of N. Sycamore Dr. as a starting point for measurements. These measurements are for the S. side of W. Reeves Rd.

- 1<sup>st</sup> is driveway 160' from starting point milling. Mill 22'X10'X1.5".
- 2<sup>nd</sup> is driveway 87' from last milling. Mill 21'X10'X1.5".
- 3<sup>rd</sup> is Edgewood Dr. 160' from last milling Edgewood Dr. and private Dr. Mill 120'X10'X1.5".
- 4<sup>th</sup> is driveway 105' from last milling. Mill 30'X10'X1.5".
- 5<sup>th</sup> is driveway 165' from last milling. Mill 21'X10'X1.5".
- 6<sup>th</sup> is driveway 232' from last milling. Mill 26'X10'X1.5".
- 7<sup>th</sup> is driveway 94' from last milling. Mill 24'X10'X1.5".
- 8<sup>th</sup> is driveway 25' from last milling. Mill 24'X10'X1.5".
- 9<sup>th</sup> is driveway 121' from last milling. Mill 23'X10'X1.5".
- 10<sup>th</sup> is Driveway 100' from last milling. Mill 30'X10'X1.5".
- 11<sup>th</sup> is Driveway 67' from last milling. Mill 26'X10'X1.5".
- 12<sup>th</sup> is driveway 20' from last milling. Mill 24'X10'X1.5".
- 13<sup>th</sup> is driveway 77' from last milling. Mill 24'X10'X1.5".
- 14<sup>th</sup> is driveway 99' from last milling. Mill 19'X10'X1.5".
- 15<sup>th</sup> is driveway 129' from last milling. Mill 23'X10'X1.5".
- 16<sup>th</sup> is driveway 136' from last milling. Mill 20'X10'X1.5".
- 17<sup>th</sup> is driveway 74' from last milling. Mill 30'X10'X1.5".
- 18<sup>th</sup> is driveway 57' from last milling. Mill 20'X10'X1.5".
- 19<sup>th</sup> is driveway 17' from last milling. Mill 31'X10'X1.5".

## Milling W. Reeves Rd. South Side

W. Reeves Rd. Milling measurements using the west side of N. Sycamore Dr. as a starting point for measurements. These measurements are for the N. side of W. Reeves Rd.

- 1<sup>st</sup> is intersection is Reeves and Loudon mill 37'X10'X1.5".
- 2<sup>nd</sup> is intersection Loudon Rd. and Reeves mill 80'X10'X1.5".
- 3<sup>rd</sup> is Terry Ct. 872' from starting point. Milling. Mill 66'X10'X1.5".
- 4<sup>th</sup> is Mary St. which is 222' from Terry Ct. milling. Mill 65'X10'X1.5".
- 5<sup>th</sup> is Driveway which is 127' from Mary St. milling. Mill 35'X10'X1.5".
- 6<sup>th</sup> is Raubs Ln. which is 309' from Mary St. milling. Mill 51'X10'X1.5".
- 7<sup>th</sup> is Driveway which is 253' from Raubs Ln. milling. Mill 54'X10'X1.5".
- 8<sup>th</sup> is mill intersection of Reeves and Sale St. milling. Mill 22'X10'X1.5".

## Milling W. Reeves Rd. North side

W. Reeves Rd. Milling measurements using the west side of N. Sycamore Dr. as a starting point for measurements. These measurements are for the S. side of W. Reeves Rd.

- 1<sup>st</sup> is driveway 160' from starting point milling. Mill 22'X10'X1.5".
- 2<sup>nd</sup> is driveway 87' from last milling. Mill 21'X10'X1.5".
- 3<sup>rd</sup> is Edgewood Dr. 160' from last milling Edgewood Dr. and private Dr. Mill 120'X10'X1.5".
- 4<sup>th</sup> is driveway 105' from last milling. Mill 30'X10'X1.5".
- 5<sup>th</sup> is driveway 165' from last milling. Mill 21'X10'X1.5".
- 6<sup>th</sup> is driveway 232' from last milling. Mill 26'X10'X1.5".
- 7<sup>th</sup> is driveway 94' from last milling. Mill 24'X10'X1.5".
- 8<sup>th</sup> is driveway 25' from last milling. Mill 24'X10'X1.5".
- 9<sup>th</sup> is driveway 121' from last milling. Mill 23'X10'X1.5".
- 10<sup>th</sup> is Driveway 100' from last milling. Mill 30'X10'X1.5".
- 11<sup>th</sup> is Driveway 67' from last milling. Mill 26'X10'X1.5".
- 12<sup>th</sup> is driveway 20' from last milling. Mill 24'X10'X1.5".
- 13<sup>th</sup> is driveway 77' from last milling. Mill 24'X10'X1.5".
- 14<sup>th</sup> is driveway 99' from last milling. Mill 19'X10'X1.5".
- 15<sup>th</sup> is driveway 129' from last milling. Mill 23'X10'X1.5".
- 16<sup>th</sup> is driveway 136' from last milling. Mill 20'X10'X1.5".
- 17<sup>th</sup> is driveway 74' from last milling. Mill 30'X10'X1.5".
- 18<sup>th</sup> is driveway 57' from last milling. Mill 20'X10'X1.5".
- 19<sup>th</sup> is driveway 17' from last milling. Mill 31'X10'X1.5".

## W. Reeves Rd. repair

W. Reeves Rd. from the S.W. side of N. Sycamore Dr. 90' to first repair. South side of Reeves Rd. only

1st repair is 90' from start point. Repair is 138'X5'6". Equals 25 ton.

2<sup>nd</sup> repair is 32' from end of 1<sup>st</sup> repair 2<sup>nd</sup> repair is 83'X5'6". Equals 15 ton.

3<sup>rd</sup> repair is 337' from end of 2<sup>nd</sup> repair 3<sup>rd</sup> repair is 70'X5'6". Equals 13 ton.

4<sup>th</sup> repair is 59' from end of 3<sup>rd</sup> repair 4<sup>th</sup> repair is 21'X5'6". Equals 4 ton.

5<sup>th</sup> repair is 455' from end of 4<sup>th</sup> repair 5<sup>th</sup> repair is 70'X5'6". Equals 13 ton.

6<sup>th</sup> repair is 829' from end of 5<sup>th</sup> repair 6<sup>th</sup> repair is 54'X5'6". Equals 10 ton.

7<sup>th</sup> repair is 272' from end of 6<sup>th</sup> repair 6<sup>th</sup> repair is 79'X5'6". Equals 14 ton.

W. Reeves Rd. from the N.W. side of N. Sycamore Dr. N.side of Reeves Rd. only.

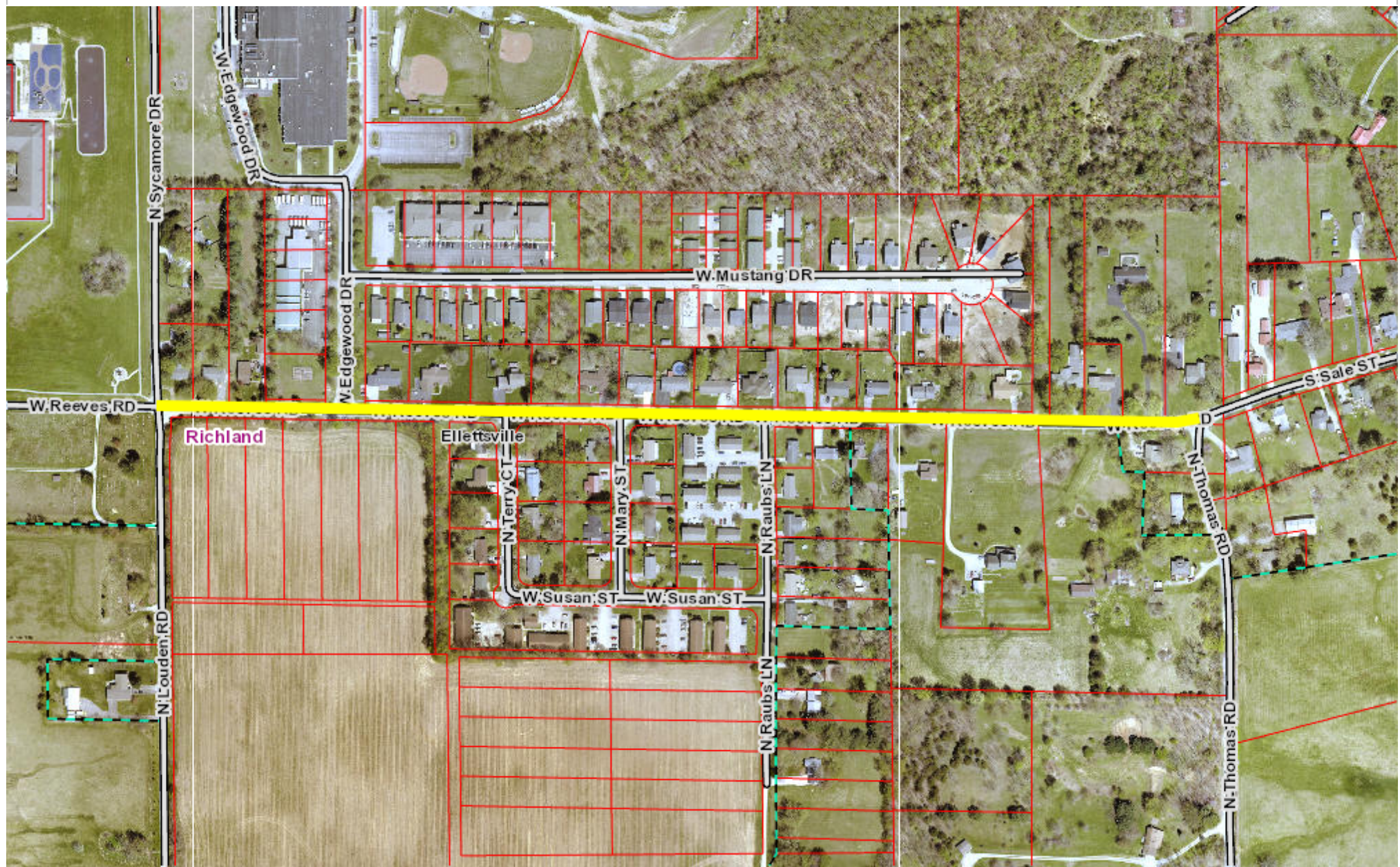
1<sup>st</sup> repair is 1520' from N.W. side of N. Sycamore Dr. repair is 30'X5'6". Equals 6 ton.

2<sup>nd</sup> Repair is 214' from end of 1st repair. Repair is 24'X5'6". Equals 5 ton.

3<sup>rd</sup> repair is 321' from end of 2<sup>nd</sup> repair. Repair is 74'X5'6". Equals 14 ton.

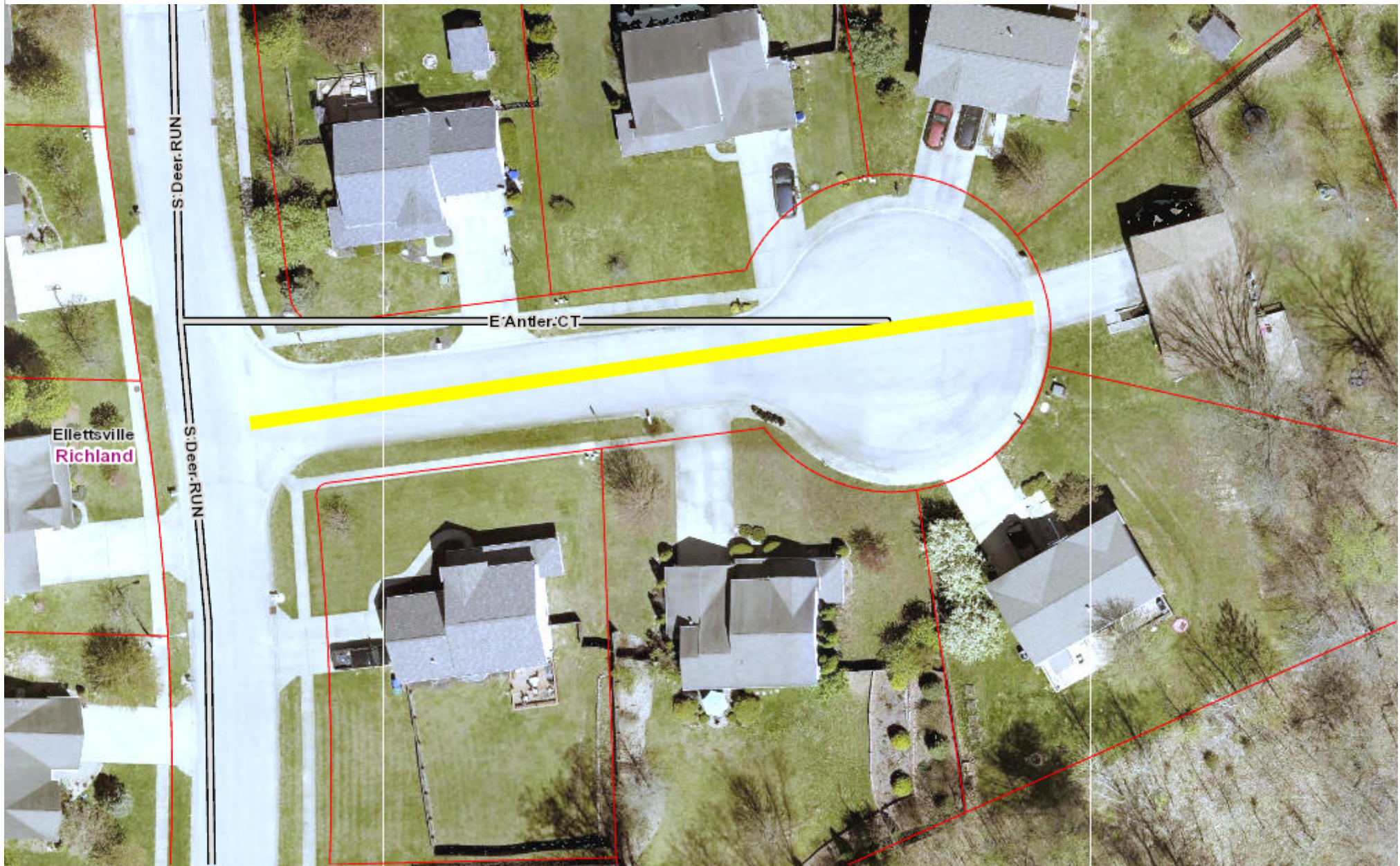


W. Reeves Rd. From N. Thomas Rd. to N. Sycamore Dr.



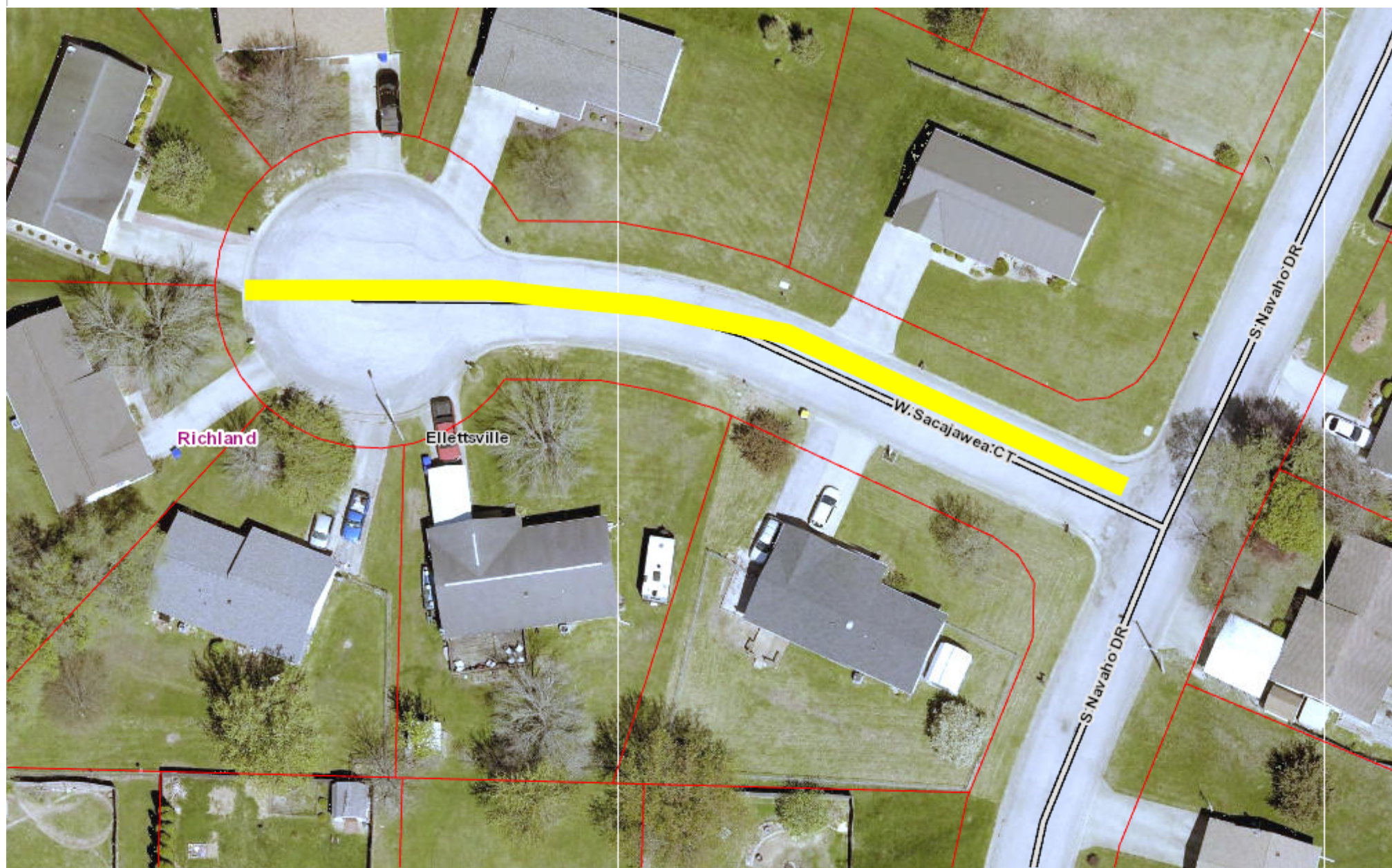


E. Antler Ct. - From S. Deer Run to End of Cul-de-Sac





W. Sacajawea Ct. - From S. Navaho Dr. to End of Cul-de-Sac





S. Cree Ct. - From W. Tecumseh Dr. to End of Cul-de-Sac



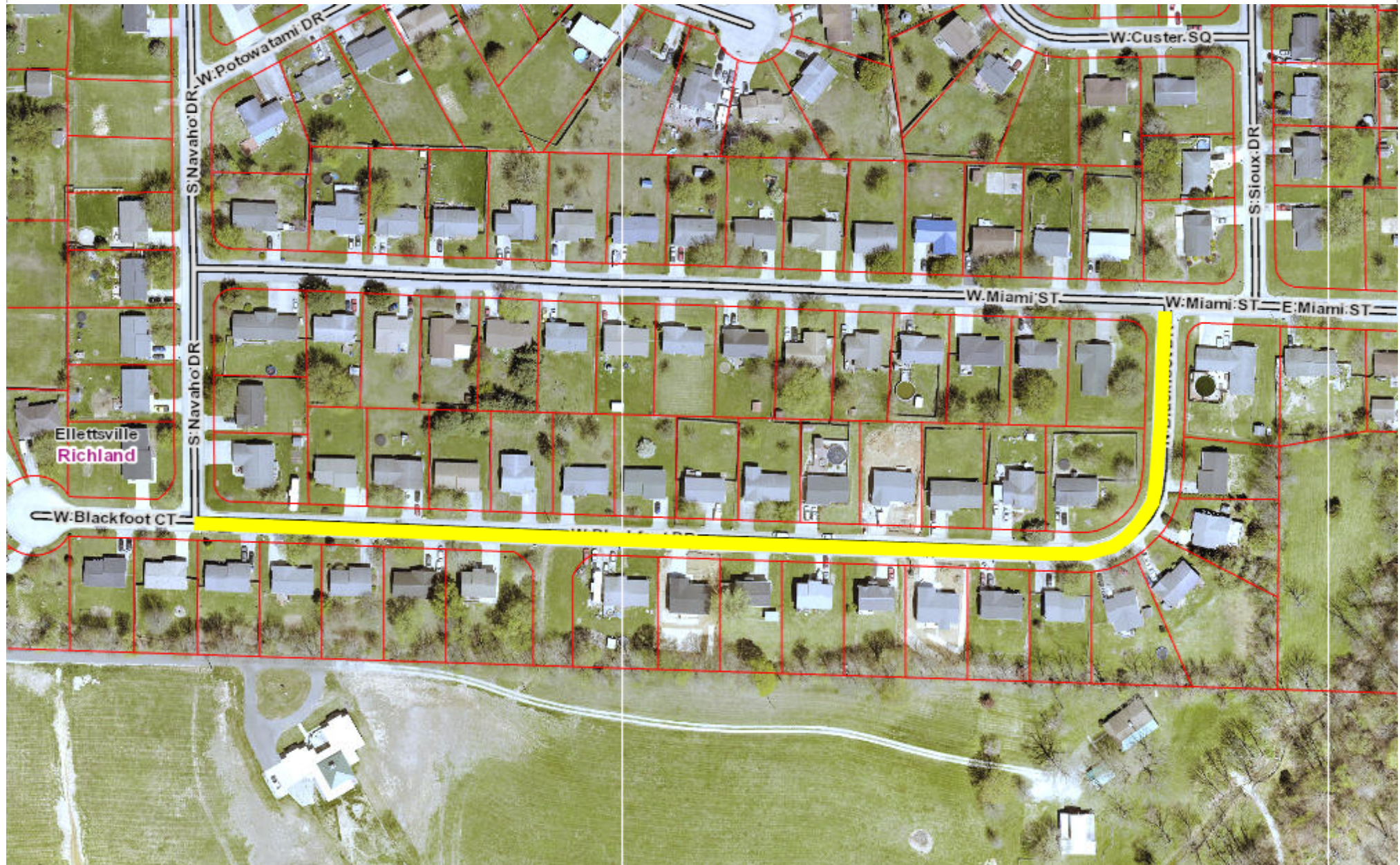


W. Blackfoot Ct. - From S. Navaho Dr. to End of Cul-de-Sac



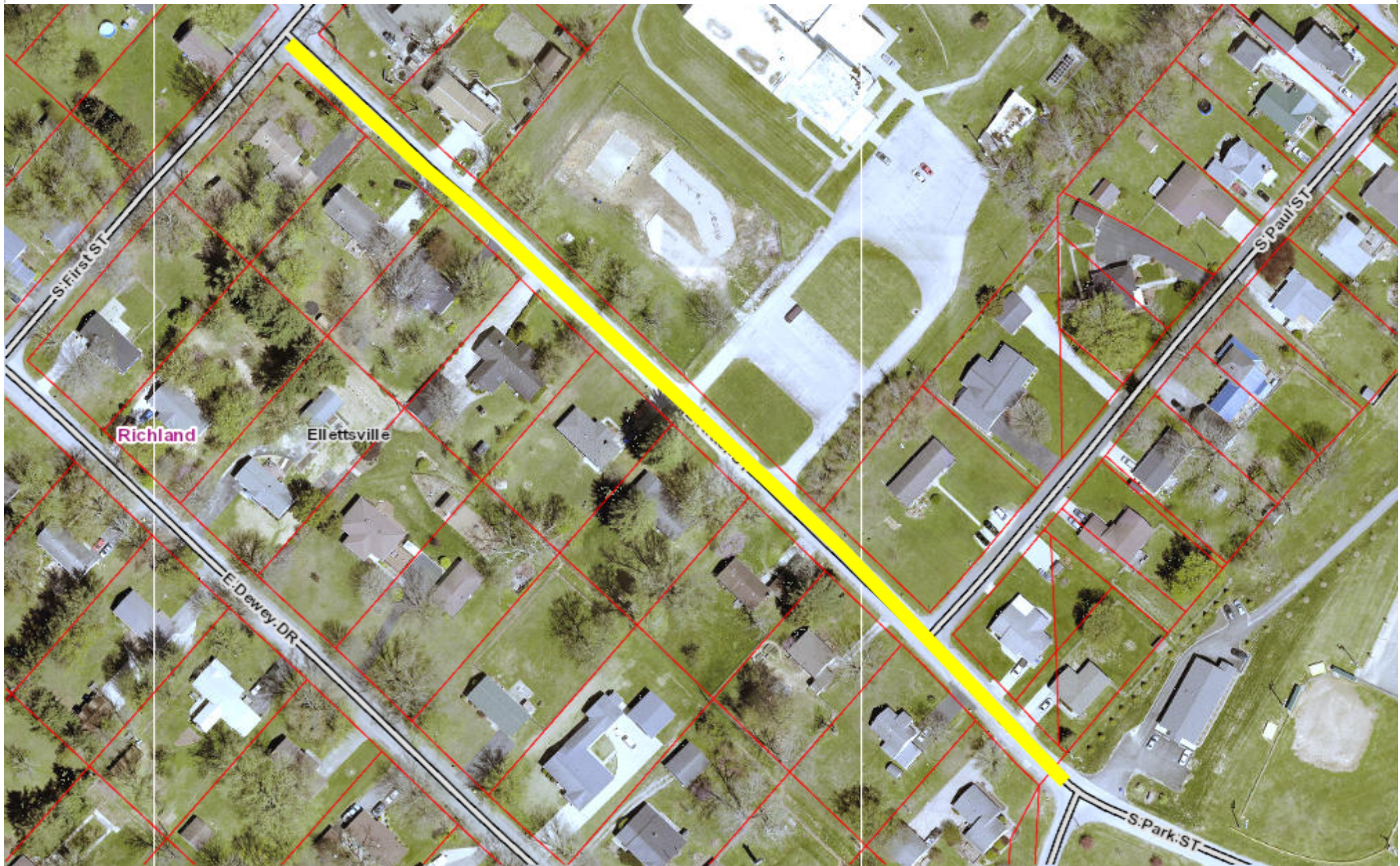


W. Blackfoot Dr. - From S. Navaho Dr. to W. Miami St.



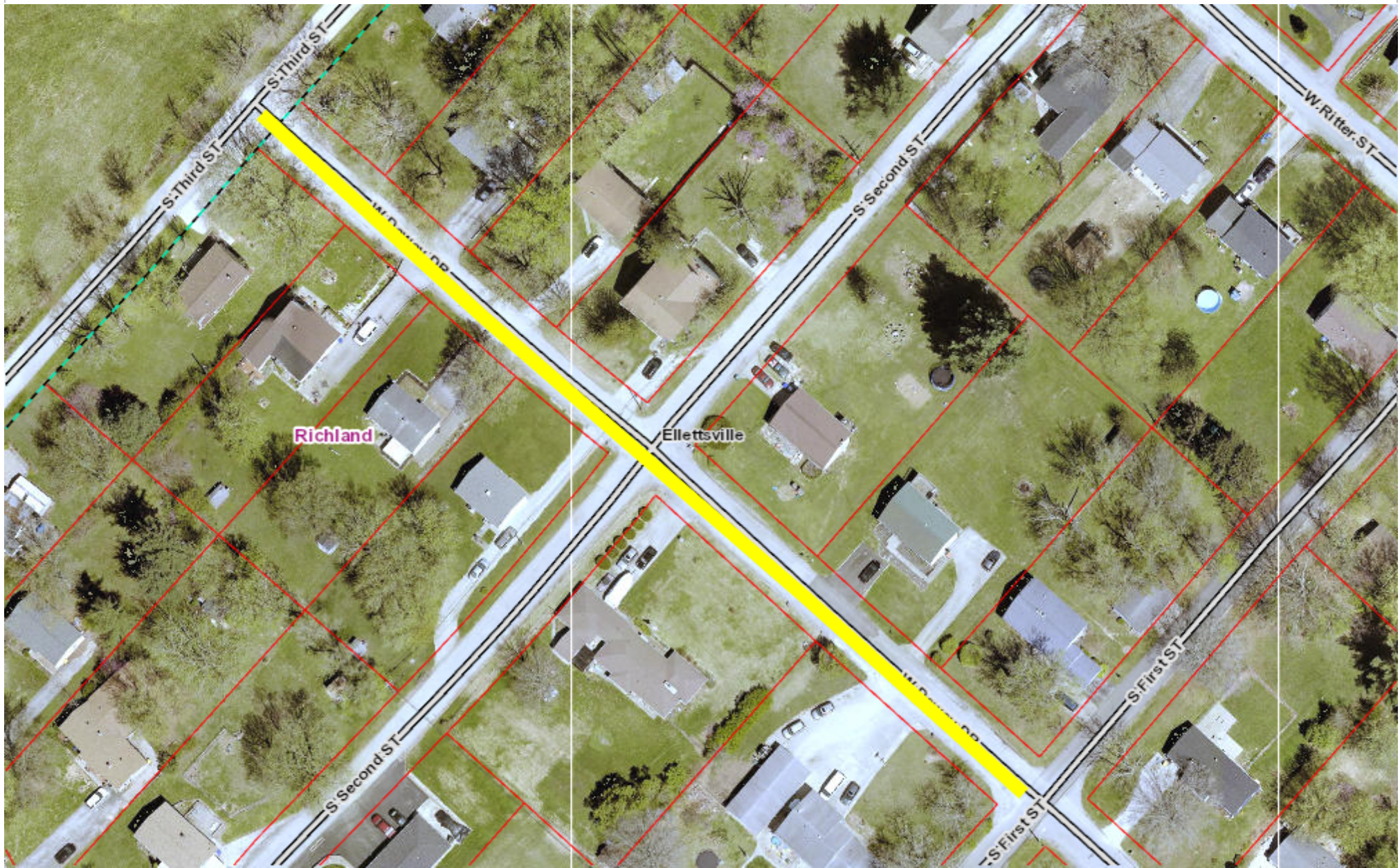


E. Ritter St. - From S. First St. to S. Park St.



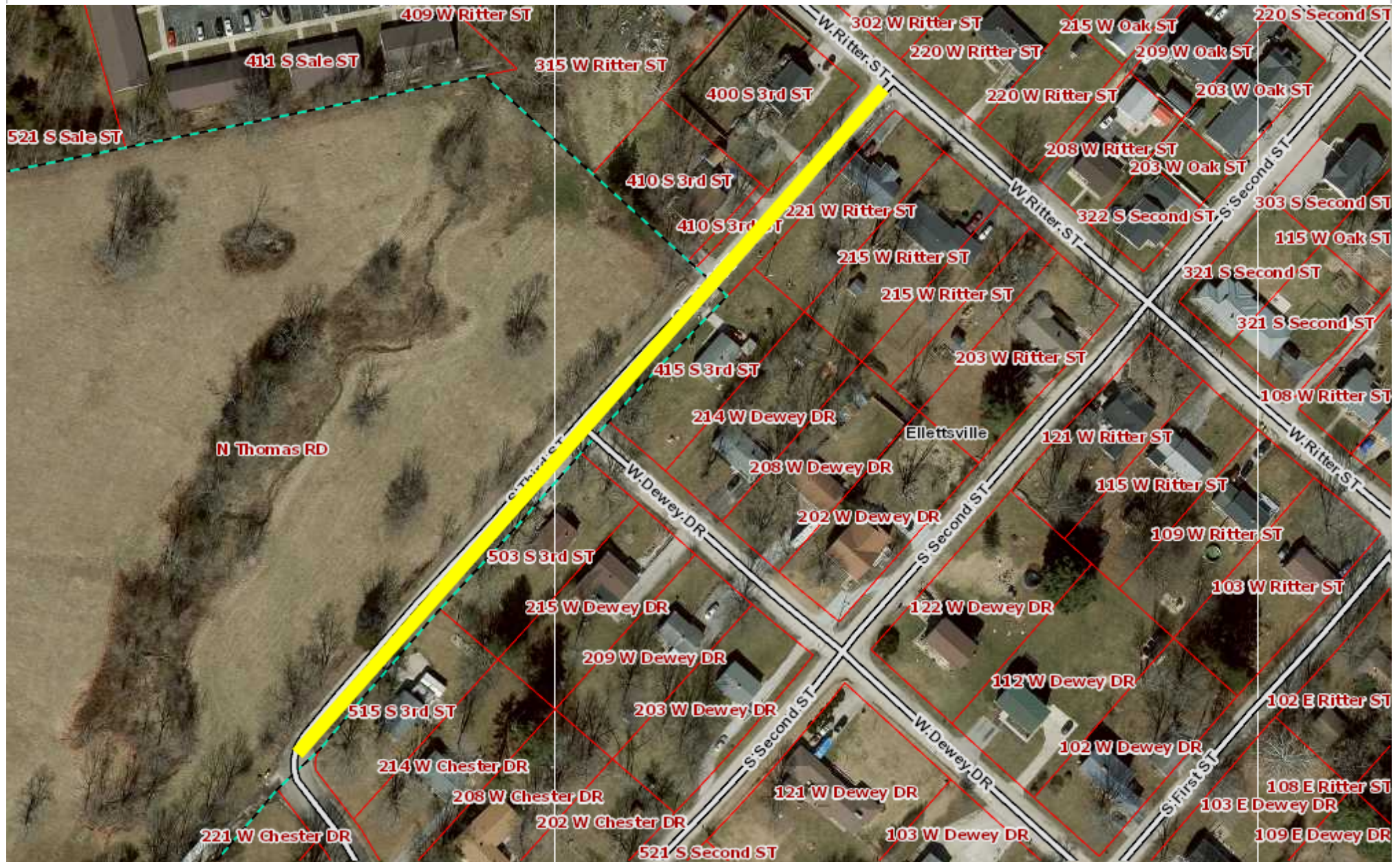


W. Dewey Dr. - From S. Third St. to S. First St.





# S. Third St. - W. Ritter St. to W. Chester Dr.

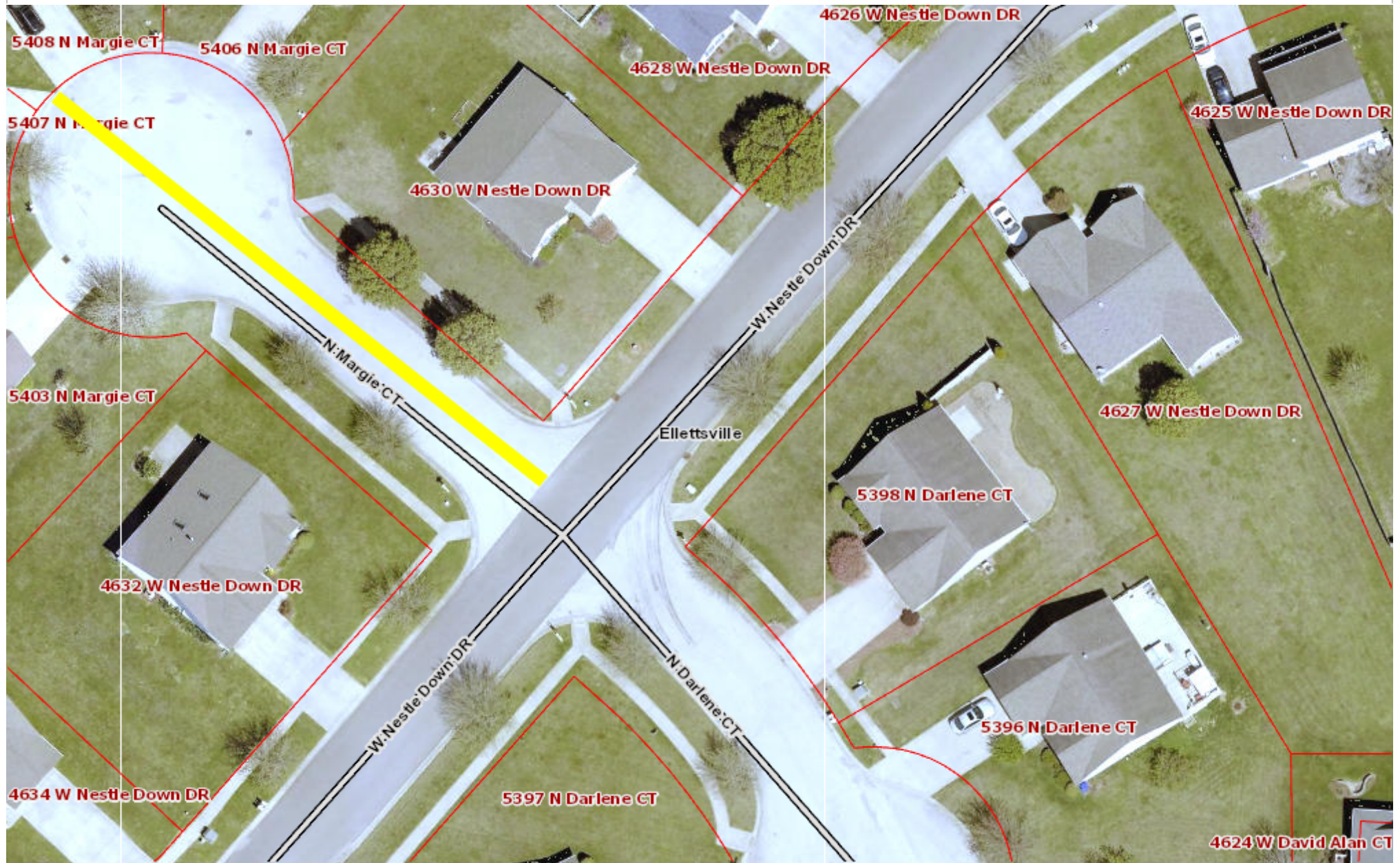






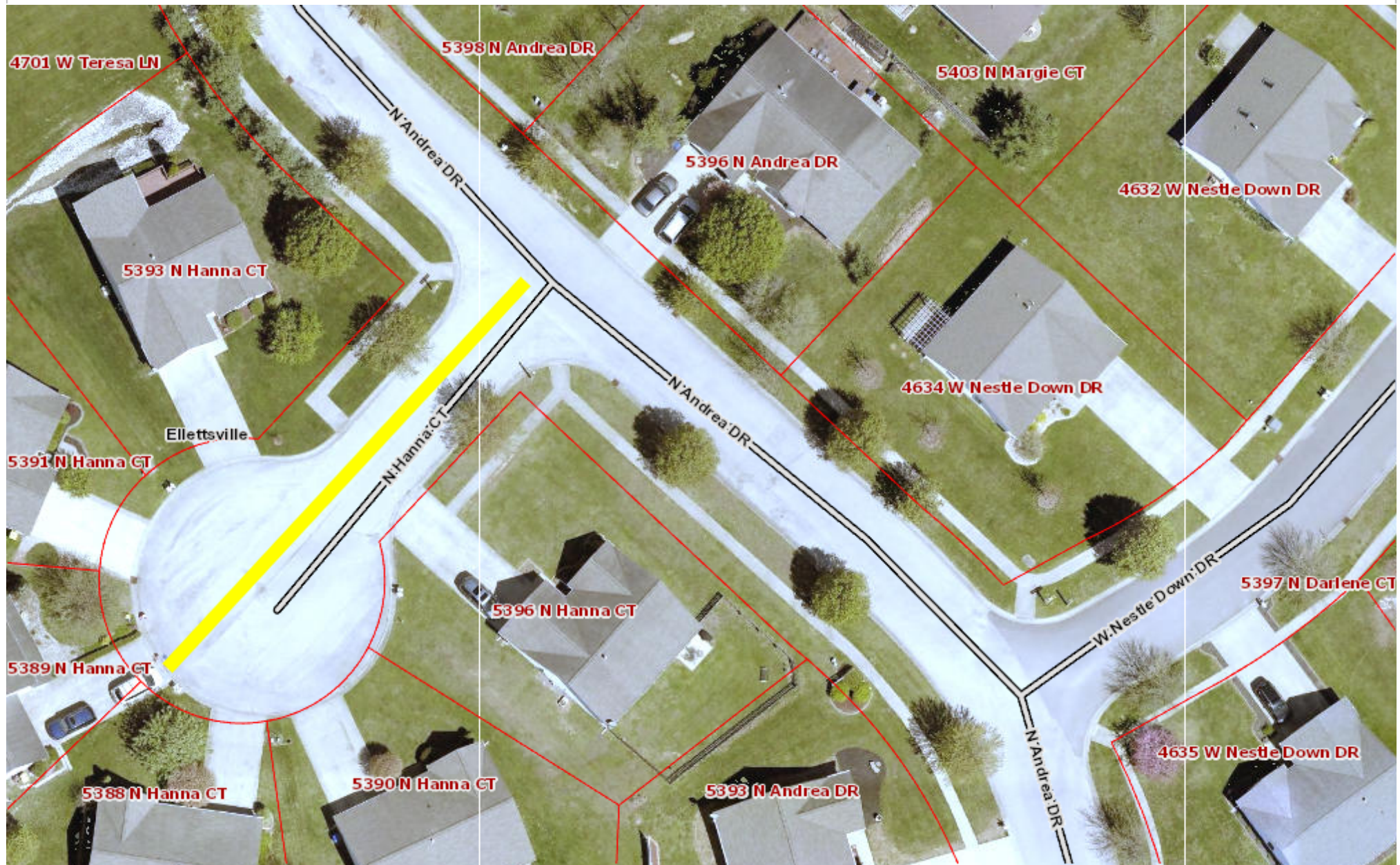


N. Margie Ct. - From W. Nestle Down Dr. to End of Cul-de-Sac



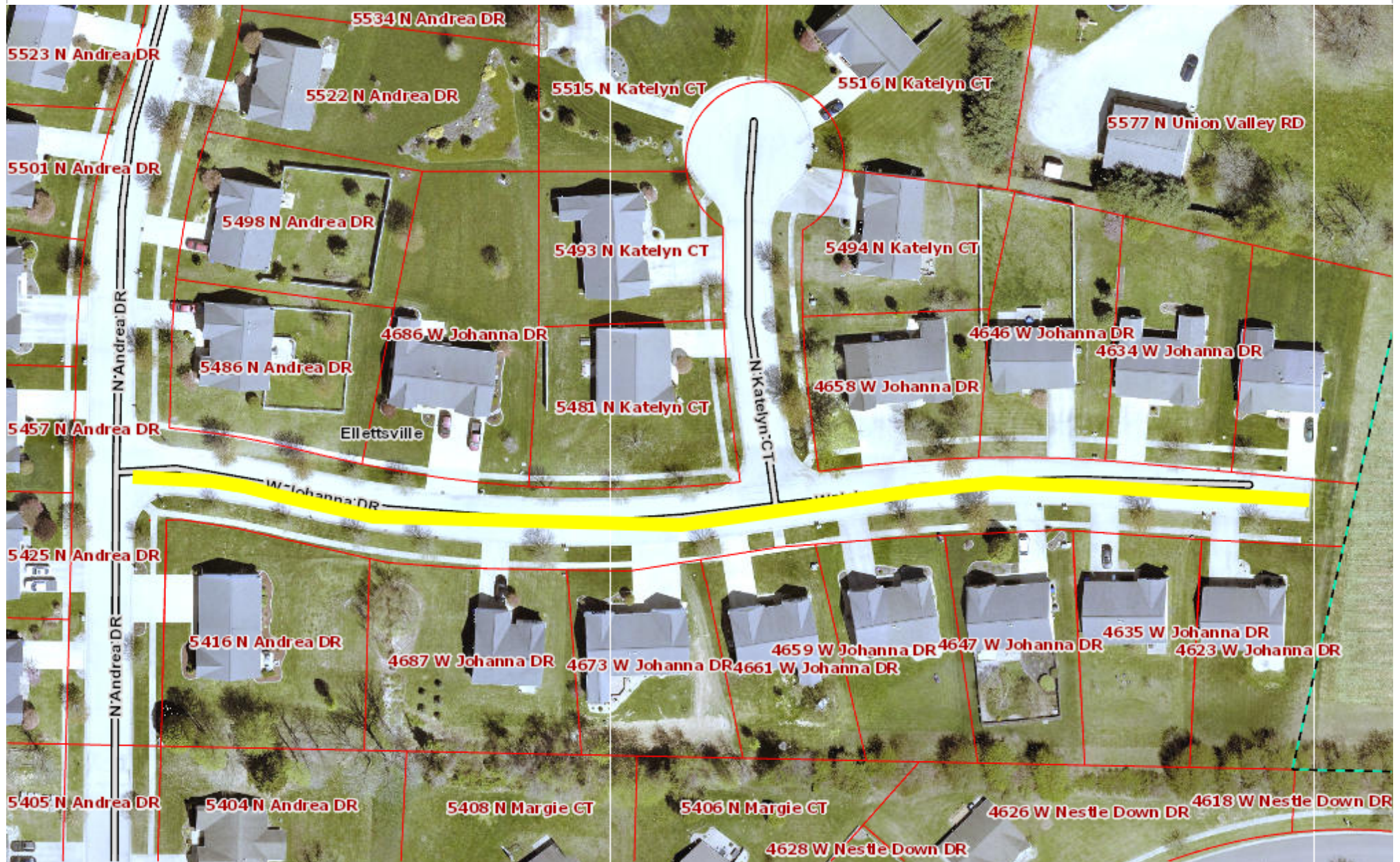


# N. Hanna Ct. - From N. Andrea Dr. to End of Cul-de-Sac



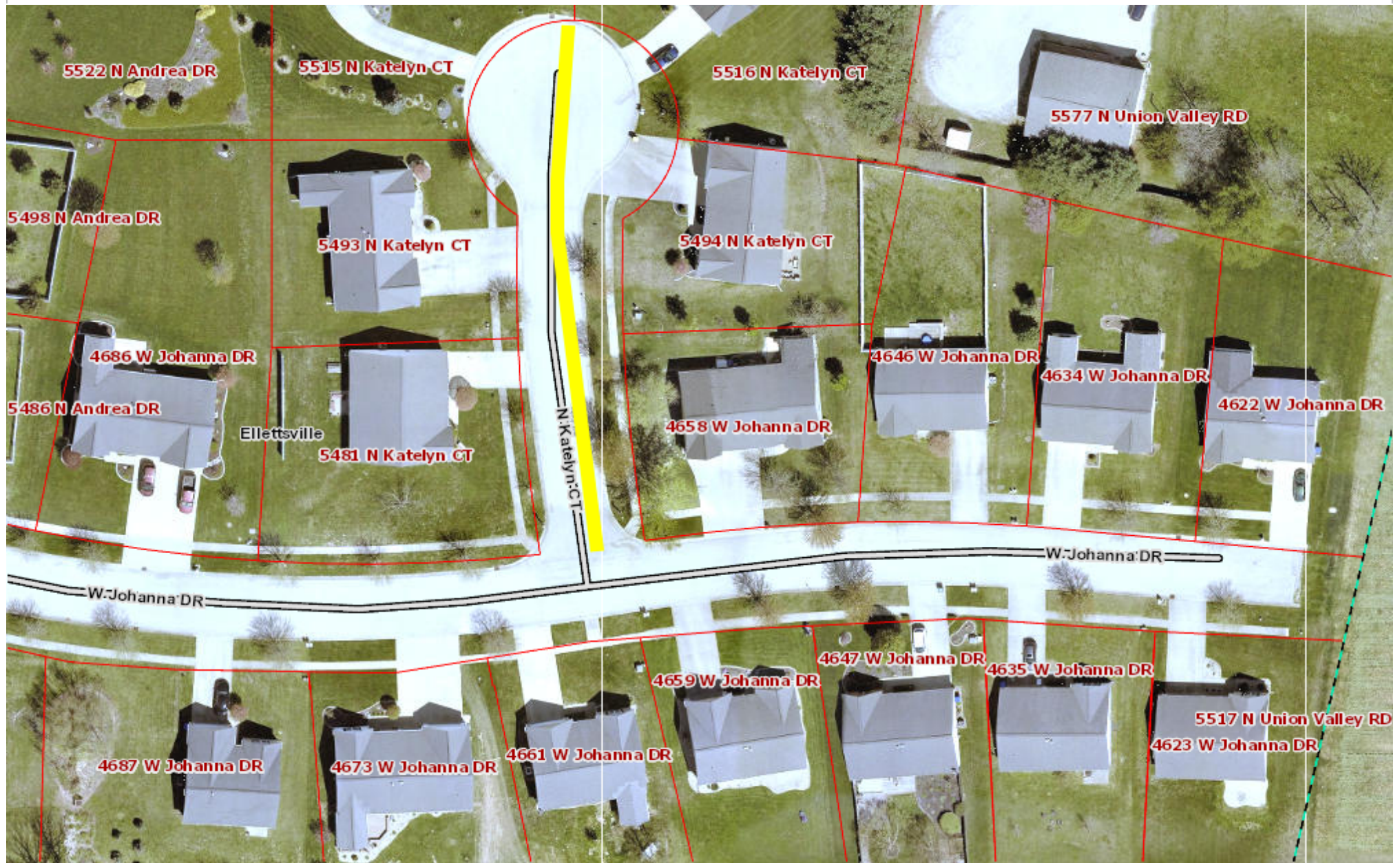


# W. Johanna Dr. - From N. Andrea Dr. to Dead End





N. Katelyn Ct. - From W. Johanna Dr. to End of Cul-de-sac



## **W. Reeves Rd.**

Pavement resurfacing including incidental associated work

W. Reeves Rd. - From N.Thomas to N.Sycamore

Length: 2,629 feet

Width: 20 feet

Resurfacing Thickness: 1.5 inches

Description	Quantity	Unit	Unit Price	Extension
Mobilization/Demobilization	1	LS		
Patching/Repair 6" minimum depth	119	TON		
Milling butt joints	93	SYS		
HMA Wedge and Level, Type B	35	TON		
Asphalt for Tack Coat	5,842	SYS		
HMA, Surface Type B	482	TON		
Stripping	5,258	Feet		
Total Amount of Quote				

### E. Antler Ct.

Pavement resurfacing including incidental associated work

E. Antler Ct. - From S. Deer Run to End of Cul-de-Sac

Length: 168 feet

Width: 24 feet

Diameter 80 feet

Resurfacing Thickness: 1.5 inches

Description	Quantity	Unit	Unit Price	Extension
Mobilization/Demobilization	1	LS		
Milling Asphalt, 1.5 in.	1,080	SYS		
HMA Wedge and Level, Type B	10	TON		
Asphalt for Tack Coat	1,080	SYS		
HMA, Surface Type B	89	TON		
Total Amount of Quote				



## **W. Sacajawea Ct.**

Pavement resurfacing including incidental associated work

W. Sacajawea Ct. - From S. Navaho Dr. to End of Cul-de-Sac

Length: 215 feet

Width: 24 feet

Diameter 76 feet

Resurfacing Thickness: 1.5 inches

Description	Quantity	Unit	Unit Price	Extension
Mobilization/Demobilization	1	LS		
Milling Asphalt, 1.5 in.	1,100	SYS		
HMA Wedge and Level, Type B	10	TON		
Asphalt for Tack Coat	1,100	SYS		
HMA, Surface Type B	91	TON		
Total Amount of Quote				

## **S. Cree Ct.**

Pavement resurfacing including incidental associated work

S. Cree Ct. - From W. Tecumseh Dr. to End of Cul-de-Sac

Length: 85 feet

Width: 24 feet

Diameter 76 feet

Resurfacing Thickness: 1.5 inches

Description	Quantity	Unit	Unit Price	Extension
Mobilization/Demobilization	1	LS		
Milling Asphalt, 1.5 in.	753	SYS		
HMA Wedge and Level, Type B	5	TON		
Asphalt for Tack Coat	753	SYS		
HMA, Surface Type B	63	TON		
Total Amount of Quote				

## **W. Blackfoot Ct.**

Pavement resurfacing including incidental associated work  
W. Blackfoot Ct. - From S. Navaho Dr. to End of Cul-de-Sac

Length: 160 feet  
Width: 24 feet  
Diameter 76 feet  
Resurfacing Thickness: 1.5 inches

Description	Quantity	Unit	Unit Price	Extension
Mobilization/Demobilization	1	LS		
Milling Asphalt, 1.5 in.	940	SYS		
HMA Wedge and Level, Type B	5	TON		
Asphalt for Tack Coat	940	SYS		
HMA, Surface Type B	78	TON		
Total Amount of Quote				

## **W. Blackfoot Dr.**

Pavement resurfacing including incidental associated work

W. Blackfoot Dr. - From S. Navaho Dr. to W. Miami St.

Length: 1,484 feet

Width: 24 feet

Resurfacing Thickness: 1.5 inches

Description	Quantity	Unit	Unit Price	Extension
Mobilization/Demobilization	1	LS		
Milling Asphalt, 1.5 in.	3,970	SYS		
HMA Wedge and Level, Type B	20	TON		
Asphalt for Tack Coat	3,970	SYS		
HMA, Surface Type B	328	TON		
Total Amount of Quote				

## **E. Ritter St.**

Pavement resurfacing including incidental associated work

E. Ritter St. - From S. First St. to S. Park St.

Length: 1,022 feet

Width: 21 feet

Resurfacing Thickness: 1.5 inches

Description	Quantity	Unit	Unit Price	Extension
Mobilization/Demobilization	1	LS		
Milling Asphalt, 1.5 in.	2,500	SYS		
HMA Wedge and Level, Type B	20	TON		
Asphalt for Tack Coat	2,500	SYS		
HMA, Surface Type B	206	TON		
Total Amount of Quote				

## **W. Dewey Dr.**

Pavement resurfacing including incidental associated work

W. Dewey Dr. - From S. Third St. to S. First St.

Length: 659 feet

Width: 21 up to 28 feet

Resurfacing Thickness: 1.5 inches

Description	Quantity	Unit	Unit Price	Extension
Mobilization/Demobilization	1	LS		
Milling Asphalt, 1.5 in.	1,820	SYS		
HMA Wedge and Level, Type B	10	TON		
Asphalt for Tack Coat	1,820	SYS		
HMA, Surface Type B	150	TON		
Total Amount of Quote				

## **S. Third St.**

Pavement resurfacing including incidental associated work

S. Third St. - From W. Ritter St. to W. Chester Dr.

Length: 859 feet

Width: 20 feet

Resurfacing Thickness: 1.5 inches

Description	Quantity	Unit	Unit Price	Extension
Mobilization/Demobilization	1	LS		
Milling Asphalt, 1.5 in.	1,920	SYS		
HMA Wedge and Level, Type B	10	TON		
Asphalt for Tack Coat	1,920	SYS		
HMA, Surface Type B	159	TON		
Total Amount of Quote				

## **N. Darlene Ct.**

Pavement resurfacing including incidental associated work

N. Darlene Ct. - From W. Nestle Down Dr. to End of Cu-de-Sac

Length: 103 feet

Width: 27 feet

Diameter 80 feet

Resurfacing Thickness: 1.5 inches

Description	Quantity	Unit	Unit Price	Extension
Mobilization/Demobilization	1	LS		
Milling Asphalt, 1.5 in.	1,030	SYS		
HMA Wedge and Level, Type B	5	TON		
Asphalt for Tack Coat	1,030	SYS		
HMA, Surface Type B	85	TON		
Total Amount of Quote				



## **N. Margie Ct.**

Pavement resurfacing including incidental associated work

N. Margie Ct. - From W. Nestle Down Dr. to End of Cul-de-Sac

Length: 116 feet

Width: 27 feet

Diameter 80 feet

Resurfacing Thickness: 1.5 inches

Description	Quantity	Unit	Unit Price	Extension
Mobilization/Demobilization	1	LS		
Milling Asphalt, 1.5 in.	1,000	SYS		
HMA Wedge and Level, Type B	5	TON		
Asphalt for Tack Coat	1,000	SYS		
HMA, Surface Type B	83	TON		
Total Amount of Quote				

## **N. Hanna Ct.**

Pavement resurfacing including incidental associated work

N. Hanna Ct. - From N. Andrea Dr. to End of Cul-de-Sac

Length: 83 feet

Width: 27 feet

Diameter 80 feet

Resurfacing Thickness: 1.5 inches

Description	Quantity	Unit	Unit Price	Extension
Mobilization/Demobilization	1	LS		
Milling Asphalt, 1.5 in.	900	SYS		
HMA Wedge and Level, Type B	5	TON		
Asphalt for Tack Coat	900	SYS		
HMA, Surface Type B	75	TON		
Total Amount of Quote				

## W. Johanna Dr.

Pavement resurfacing including incidental associated work

W. Johanna Dr. - From N. Andrea Dr. to Dead End

Length: 750 feet

Width: 27 feet

Resurfacing Thickness: 1.5 inches

Description	Quantity	Unit	Unit Price	Extension
Mobilization/Demobilization	1	LS		
Milling Asphalt, 1.5 in.	2,400	SYS		
HMA Wedge and Level, Type B	10	TON		
Asphalt for Tack Coat	2,400	SYS		
HMA, Surface Type B	198	TON		
Total Amount of Quote				

## **N. Katelyn Ct.**

Pavement resurfacing including incidental associated work

N. Katelyn Ct. - From W. Johanna Dr. to End of Cul-de-Sac

Length: 178 feet

Width: 27 feet

Diameter 80 feet

Resurfacing Thickness: 1.5 inches

Description	Quantity	Unit	Unit Price	Extension
Mobilization/Demobilization	1	LS		
Milling Asphalt, 1.5 in.	1,200	SYS		
HMA Wedge and Level, Type B	10	TON		
Asphalt for Tack Coat	1,200	SYS		
HMA, Surface Type B	99	TON		
Total Amount of Quote				